
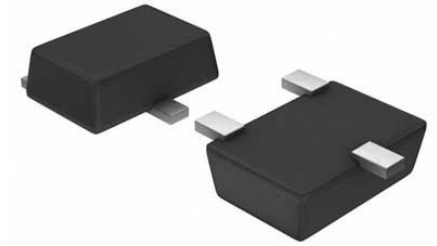


LED Driver 5 Segment 5-Pin SOT-23 T/R

Manufacturer:	Texas Instruments, Inc
Package/Case:	SOT23-5
Product Type:	Optoelectronics
RoHS:	RoHS Compliant/Lead free 
Lifecycle:	Active



Images are for reference only

[Inquiry](#)

General Description

The LM3410 and LM3410-Q1 constant current LED driver are a monolithic, high frequency, PWM DC-DC converter, available in 6-pin WSON, 8-pin MSOP-PowerPad, and 5-pin SOT-23 packages. With a minimum of external components the LM3410 and LM3410-Q1 are easy to use. It can drive 2.8-A (typical) peak currents with an internal 170-m Ω NMOS switch. Switching frequency is internally set to either 525 kHz or 1.6 MHz, allowing the use of extremely small surface mount inductors and chip capacitors. Even though the operating frequency is high, efficiencies up to 88% are easy to achieve. External shutdown is included, featuring an ultra-low standby current of 80 nA. The LM3410 and LM3410-Q1 use current-mode control and internal compensation to provide high-performance over a wide range of operating conditions. Additional features include PWM dimming, cycle-by-cycle current limit, and thermal shutdown.

Key Features

Qualified for Automotive Applications

AEC-Q100 Test Guidance With the Following:

Device Temperature Grade 1: -40°C to 125°C Ambient Operating Temperature Range

Device HBM ESD Classification Level 2

Device CDM ESD Classification Level C6

Space-Saving SOT-23 and WSON Packages

Input Voltage From 2.7 V to 5.5 V

Output Voltage From 3 V to 24 V

2.8-A (Typical) Switch Current Limit

High Switching Frequency

525 KHz (LM3410Y)

1.6 MHz (LM3410X)

170-mΩ NMOS Switch

190-mV Internal Voltage Reference

Internal Soft Start

Current-Mode, PWM Operation

Thermal Shutdown

Recommended For You

LM2438T

Texas Instruments, Inc

TO-220-9

LMB409HVMY/NOPB

Texas Instruments, Inc

MSOP10

LMB429Q1MHX/NOPB

Texas Instruments, Inc

HTSSOP14

LMB409MY/NOPB

Texas Instruments, Inc

MSOP10

LMB509SD/NOPB

Texas Instruments, Inc

QFN

LMB406HVMHX/NOPB

Texas Instruments, Inc

TSSOP14

LMB409MYX/NOPB

Texas Instruments, Inc

MSOP10

LMB405AXMY/NOPB

Texas Instruments, Inc

HVSSOP8

LM2406T

Texas Instruments, Inc

ZIP11

LM2415T

Texas Instruments, Inc
ZIP11

LM2469TA

Texas Instruments, Inc
TO-220-9

LM2468TA

Texas Instruments, Inc
TO-220

LM2467TA

Texas Instruments, Inc
TO-220-9

LM2407T

Texas Instruments, Inc
ZIP11

LM2437T

Texas Instruments, Inc
TO-220-9