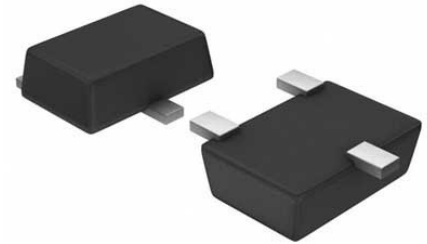


Comparator Single R-R I/P 15V 5-Pin SOT-23 T/R



Images are for reference only

[Inquiry](#)

Manufacturer:	Texas Instruments, Inc
Package/Case:	SOT23-5
Product Type:	Linear Displacement Sensors
Lifecycle:	Active

General Description

The LM7221 is a micropower CMOS comparator available in the space saving 5-Pin SOT-23 package. This makes this comparator ideal for space and weight critical designs. The LMC7221 is also available in the 8-Pin SOIC package. The LMC7221 is supplied in two offset voltage grades, 5 mV and 15 mV. The open drain output can be pulled up with a resistor to a voltage which can be higher or lower than the supply voltage—this makes the part useful for mixed voltage systems.

For a tiny comparator with a push-pull output, please see the LMC7211 datasheet.

Key Features

- Tiny 5-Pin SOT-23 package saves space
- Package is less than 1.43 mm thick
- Ensured specs at 2.7V, 5V, 15V supplies
- Typical supply current 7 μ A at 5V
- Response time of 4 μ s at 5V
- LMC7221—open drain output
- Input common-mode range beyond V and V+
- Low input current

Recommended For You

LM311MX

Texas Instruments, Inc

SOP8

LMV7219M5

Texas Instruments, Inc

SOT23-5

LM348D

Texas Instruments, Inc

SOP-14

LM224N

Texas Instruments, Inc
DIP14

LM239J

Texas Instruments, Inc
CDIP14

LMV331M5

Texas Instruments, Inc
SOT23-5

LM393ADR

Texas Instruments, Inc
SOP8

LM293DR

Texas Instruments, Inc
SOP8

LM293D

Texas Instruments, Inc
SOP8

LMV824MIX

Texas Instruments, Inc
TSSOP

LMV358M

Texas Instruments, Inc
SOP8

LMV321M5

Texas Instruments, Inc
SOT23-5

LM741H

Texas Instruments, Inc
CAN8

LMI93AH

Texas Instruments, Inc
CAN8

LMI11H/NOPB

Texas Instruments, Inc
CAN8