
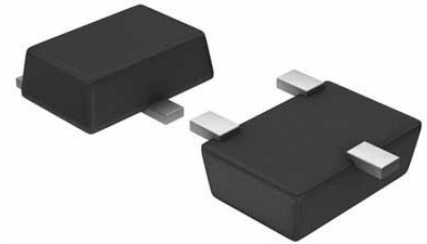


## High Side Current Monitor 3-Pin SOT-23 T/R

<b>Manufacturer:</b>	<a href="#">Diodes Inc</a>
<b>Package/Case:</b>	SOT-23-3
<b>Product Type:</b>	Power Management ICs
<b>RoHS:</b>	RoHS Compliant/Lead free 
<b>Lifecycle:</b>	Active



Images are for reference only

[Inquiry](#)

### General Description

The ZXCT1008 is a high side current sense monitor. Using this device eliminates the need to disrupt the ground plane when sensing a load current. It takes a high side voltage developed across a current shunt resistor and translates it into a proportional output current. A user defined output resistor scales the output current into a ground-referenced voltage. The wide input voltage range of 20V down to as low as 2.5V make it suitable for a range of applications. The ability to withstand high voltage transients and reverse polarity connection, makes this part very suitable for automotive and other transient rich environments.

### Key Features

- Low cost, accurate high-side current sensing
- Up to 500mV sense voltage
- 2.5V – 20V supply range
- 4 $\mu$ A quiescent current
- 1% typical accuracy
- SOT23

### Application

- Automotive current measurement
- DC motor and solenoid control
- Over current monitor
- Power management

### Recommended For You

#### ZXRE125EFTA

Diodes Inc  
SOT-23

#### ZXCT1010EFTA

Diodes Inc  
SOT23-5

#### ZXBM5210-SP-13

Diodes Inc  
HSOP8

**ZXRE125DFTA**

Diodes Inc

SOT-23

**ZXCT1109QSA-7**

Diodes Inc

SOT-23

**ZXGD3006E6TA**

Diodes Inc

SOT23-6

**ZXGD3004E6TA**

Diodes Inc

SOT-23-6

**ZXBM5210-S-13**

Diodes Inc

SOP8

**ZXGD3114N7TC**

Diodes Inc

SO-7

**ZXGD3112N7TC**

Diodes Inc

SO-7

**ZXGD3108N8TC**

Diodes Inc

SOP-8

**ZXBM5409Q-N-U**

Diodes Inc

PDIP-8

**ZXCT1023DFGTA**

Diodes Inc

TDFN4

**ZXGD3111N7TC**

Diodes Inc

7-SO

**AP3012KIR-G1**

Diodes Inc

SOT23-5