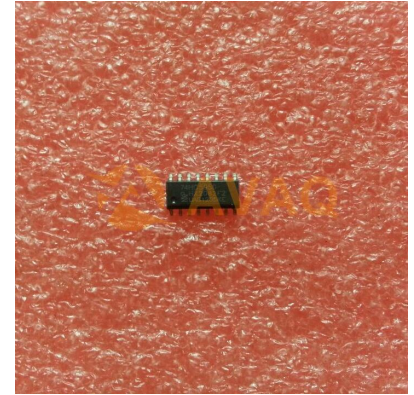


**Shift Register Single 8-Bit Serial to Serial/Parallel 16-Pin SOIC**

T/R

**Manufacturer:** [Texas Instruments, Inc](#)**Package/Case:** SOP16**Product Type:** Logic ICs**RoHS:** RoHS Compliant/Lead free **Lifecycle:** Active

Images are for reference only

[Inquiry](#)**General Description**

The SNx4HC595 devices contain an 8-bit, serial-in, parallel-out shift register that feeds an 8-bit D-type storage register. The storage register has parallel 3-state outputs. Separate clocks are provided for both the shift and storage register. The shift register has a direct overriding clear (SRCLR) input, serial (SER) input, and serial outputs for cascading. When the output-enable (OE) input is high, the outputs are in the high-impedance state.

## Key Features

8-Bit Serial-In, Parallel-Out Shift

Wide Operating Voltage Range of 2 V to 6 V

High-Current 3-State Outputs Can Drive Up to 15 LSTTL Loads

Low Power Consumption: 80- $\mu$ A (Maximum) ICC

$t_{pd}$  = 13 ns (Typical)

$\pm$ 6-mA Output Drive at 5 V

Low Input Current: 1  $\mu$ A (Maximum)

Shift Register Has Direct Clear

On Products Compliant to MIL-PRF-38535, All Parameters Are Tested Unless Otherwise Noted. On All Other Products, Production Processing Does Not Necessarily Include Testing of All Parameters.

## APPLICATIONS

Network Switches

Power Infrastructure

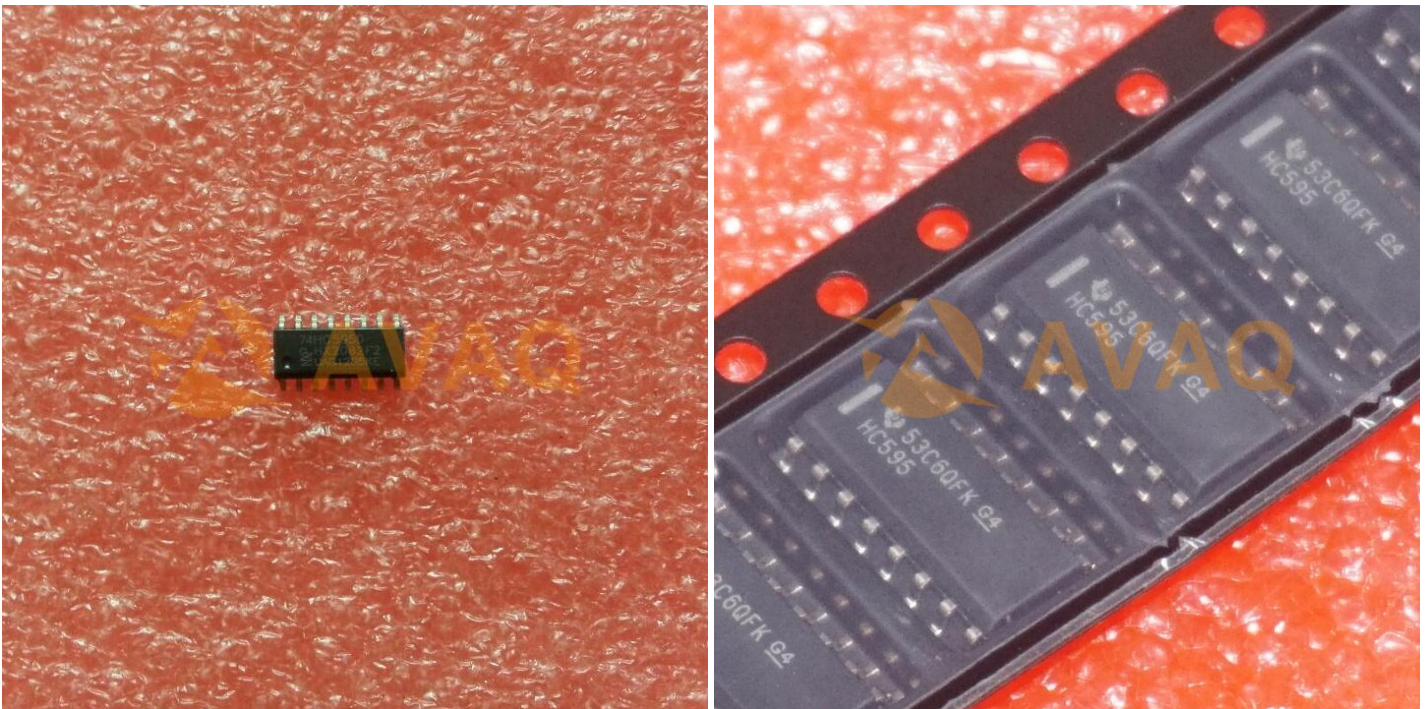
LED Displays

Servers

All other trademarks are the property of their respective owners

## Description

The SNx4HC595 devices contain an 8-bit, serial-in, parallel-out shift register that feeds an 8-bit D-type storage register. The storage register has parallel 3-state outputs. Separate clocks are provided for both the shift and storage register. The shift register has a direct overriding clear (OE) input is high, the outputs are in the high-impedance state.



## Recommended For You

**SN74S38N**

Texas Instruments, Inc  
DIP

**SN7438N**

Texas Instruments, Inc  
DIP14

**SN75462P**

Texas Instruments, Inc  
DIP8

**SN74F08D**

Texas Instruments, Inc  
SOP-14

**SN74LS257BN**

Texas Instruments, Inc  
DIP16

**SN75452BP**

Texas Instruments, Inc  
DIP8

**SN74LS245DW**

Texas Instruments, Inc  
SOP20

**SN74LS74AN**

Texas Instruments, Inc  
DIP

**SN74S74N**

Texas Instruments, Inc  
DIP

**SN7406N**

Texas Instruments, Inc  
DIP-14

**SN74CBILV3257D**

Texas Instruments, Inc  
SOP-16P

**SN74HC138DR**

Texas Instruments, Inc  
SOP16

**SN74LS14N**

Texas Instruments, Inc  
DIP

**SN74HC139N**

Texas Instruments, Inc  
DIP

**SN74AVC16T245DGGR**

Texas Instruments, Inc  
TSSOP48