
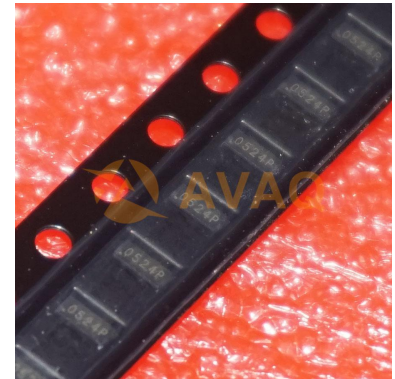


## ESD Suppressor Diode Array Uni-Dir 5V 15Vc 10-Pin SLP-P T/R

<b>Manufacturer:</b>	<a href="#">Semtech Corporation</a>
<b>Package/Case:</b>	SLP2510P8
<b>Product Type:</b>	Thyristors
<b>RoHS:</b>	RoHS Compliant/Lead free 
<b>Lifecycle:</b>	Obsolete



Images are for reference only

[Inquiry](#)

### General Description

The RClamp0524P.TCT is designed to provide circuit protection by clamping the voltage during transient events, such as electrostatic discharge (ESD) and electrical fast transients (EFT).

### Key Features

ESD protection for high-speed data lines to IEC 61000-4-2 (ESD)  $\pm 15\text{kV}$  (air)  $\pm 8\text{kV}$  (contact), IEC 61000-4-5 (Lightning) 5A (8/20 $\mu\text{s}$ ), IEC 61000-4-4 (EFT) 40A (5/50ns)

Package design optimized for high speed lines

Flow-Through design

Protects two or four I/O lines

Low capacitance: 0.3pF typical (I/O to I/O)

Low clamping voltage

Low operating voltage: 5V

Solid-state silicon-avalanche technology

### Application

High Definition Multi-Media Interface (HDMI)

Digital Visual Interface (DVI)

Unified Display Interface (UDI)

DisplayPort™ Interface

MDDI Ports

PCI Express

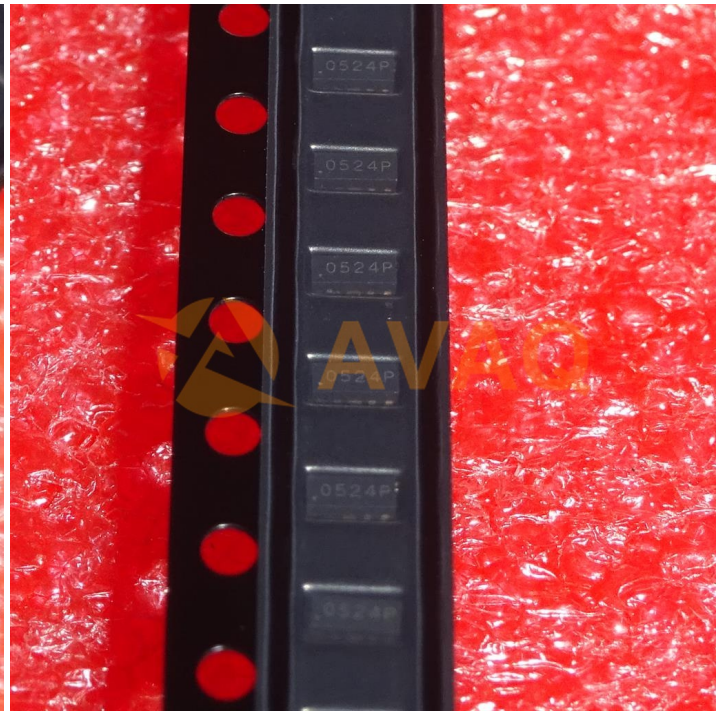
eSATA Interfaces

Packaging

RClamp0524P.TCT: Lead-Free, RoHS and WEEE Compliant, 3000 pcs. Tape & Reel

Order Codes

SLP2510P8



## Recommended For You

---

### **RCLAMP0504FATCT**

Semtech Corporation

SC70-6

### **RClamp3304NATCT**

Semtech Corporation

SLP2626P10

### **RClamp3374N.TCT**

Semtech Corporation

SLP3020

### **RClamp0524J.TCT**

Semtech Corporation

SLP2710P8

### **RClamp0531T.TCT**

Semtech Corporation

SLP1006P2T

### **RClamp0522P.TCT**

Semtech Corporation

SLP1610P4

### **RClamp0582N.TCT**

Semtech Corporation

SLP1210N6

### **RClamp0521PATCT**

Semtech Corporation

SLP1006P2

### **RClamp3654PATCT**

Semtech Corporation

SLP1616P6

### **RClamp1521P.TCT**

Semtech Corporation

SLP1006P2

### **RClamp0504F.TCT**

Semtech Corporation

SC70-6

### **RClamp7534P.TNT**

Semtech Corporation

SGP2010

### **RClamp0524PATCT**

Semtech Corporation

SLP2510P8

### **RClamp0502A.TCT**

Semtech Corporation

SC89-6

### **RCLAMP0504PATCT**

Semtech Corporation

SLP1616P6