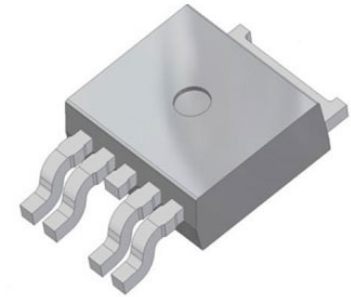


## SCR 600V 12A(RMS) 100A 3-Pin(2+Tab) DPAK T/R



Images are for reference only

[Inquiry](#)

**Manufacturer:** [Littelfuse Inc](#)

**Package/Case:** TO-252

**Product Type:** Thyristors

**Lifecycle:** Active

### General Description

The Silicon Controlled Rectifier is designed for high volume, low cost, industrial and consumer applications such as motor control, process control, temperature, light and speed control.

### Key Features

Passivated die for reliability and uniformity

Low level triggering and holding characteristics

UL94V-0 Flammability rating

3B > 8000V Human body model, C > 400V machine model - ESD ratings

### Recommended For You

#### MCR25NG

Littelfuse Inc

TO-220

#### MCR08BTIG

Littelfuse Inc

SOT-223

#### MCR716T4G

Littelfuse Inc

TO-252

#### MCR72-8G

Littelfuse Inc

TO-220

#### MCR69-3G

Littelfuse Inc

TO-220

#### MCR12MG

Littelfuse Inc

TO-220

**MCR8DCMT4G**

Littelfuse Inc

TO-252

**MCC501-18io2**

Littelfuse Inc

MODULE

**MCR68-2G**

Littelfuse Inc

TO-2203LEADSTANDA

**MCR8NG**

Littelfuse Inc

TO-220

**MCR12DSNT4G**

Littelfuse Inc

TO-252

**MCR72-3G**

Littelfuse Inc

TO-220

**MCR8SDG**

Littelfuse Inc

TO-220

**MCR25MG**

Littelfuse Inc

TO-220

**MCR8SNG**

Littelfuse Inc

TO-220