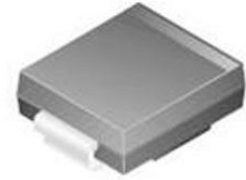


**Diode TVS Single Uni-Dir 24V 1.5KW 2-Pin SMC T/R**

Images are for reference only

[Inquiry](#)

**Manufacturer:** [Littelfuse Inc](#)

**Package/Case:** SMC

**Product Type:** Thyristors

**Lifecycle:** Active

**General Description**

1500 Watt Peak Pulse Power VOLTAGE-5.0 TO 440 Volts

**Key Features**

Halogen-Free and RoHS compliant

For surface mount applications in order to optimize board space

Low profile package

Built-in strain relief

Glass passivated junction

Low inductance

Excellent clamping capability

Repetition Rate (duty cycle): 0.05%

Fast response time: typically less than 1.0ps from 0 Volts to V(BR) min.

Typical IR less than 1mA above 10V

High temperature soldering: 250 degrees C/10 seconds at terminals

Plastic package has Underwriters Laboratory Flammability 94V-O

**Recommended For You**

**SMAJ12A**

Littelfuse Inc

SMA

**SMAJ58CA**

Littelfuse Inc

SMA

**SMBJ22A**

Littelfuse Inc

SMB

**SMAJ30A**

Littelfuse Inc

SMA

**SMBJ30A**

Littelfuse Inc

SMB

**SMAJ24CA**

Littelfuse Inc

DO-214AC

**SMBJ18A**

Littelfuse Inc

SMB

**SMBJ24A**

Littelfuse Inc

SMB

**SMBJ36CA**

Littelfuse Inc

SMB

**SMAJ12CA**

Littelfuse Inc

SMA

**SMCJ30CA**

Littelfuse Inc

SMC

**SMAJ28CA**

Littelfuse Inc

SMA

**SMBJ26CA**

Littelfuse Inc

SMB

**SMBJ17A**

Littelfuse Inc

SMB

**SMBJ20A**

Littelfuse Inc

SMB