
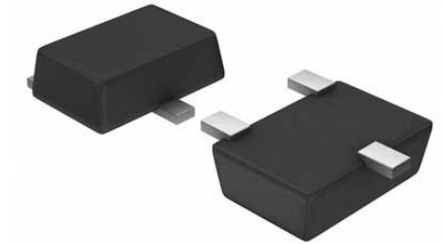


## Automotive ultra low capacitance ESD protection

<b>Manufacturer:</b>	<a href="#">STMicroelectronics, Inc</a>
<b>Package/Case:</b>	SOT23-6
<b>Product Type:</b>	Thyristors
<b>RoHS:</b>	RoHS Compliant/Lead free 
<b>Lifecycle:</b>	Active



Images are for reference only

[Inquiry](#)

## General Description

The DVIULC6-4SC6Y is a monolithic, application specific discrete device dedicated to ESD protection of high speed interfaces, such as DVI, HDMI, IDB 1394 bus, USB2.0, Ethernet links and video lines. Its ultralow line capacitance secures a high level of signal integrity without compromise in protecting sensitive chips against the most stringently characterized ESD strikes.

## Key Features

4-line ESD protection (IEC 61000-4-2)

Protects VBUS when applicable

Ultralow capacitance: 0.6 pF at F = 825 MHz

Fast response time compared with varistors

RoHS compliant

AEC-Q101 qualified

Benefits

ESD protection of VBUS

Optimized rise and fall times for maximum data integrity

Consistent D+ / D- signal balance: Optimum capacitance matching tolerance for ultralow intra pair skew: I/O to ground = 0.015 pF, I/O to I/O = 0.007 pF Matching high bit rate DVI, HDMI, and IDB 1394 bus requirements

Low PCB space occupation: 9 mm<sup>2</sup>

Higher reliability offered by monolithic integration

Optimum capacitance matching tolerance for ultralow intra pair skew: I/O to ground = 0.015 pF, I/O to I/O = 0.007 pF

Matching high bit rate DVI, HDMI, and IDB 1394 bus requirements

ESD protection of VBUS

Optimized rise and fall times for maximum data integrity

Consistent D+ / D- signal balance:

Optimum capacitance matching tolerance for ultralow intra pair skew: I/O to ground = 0.015 pF, I/O to I/O = 0.007 pF

Matching high bit rate DVI, HDMI, and IDB 1394 bus requirements

Optimum capacitance matching tolerance for ultralow intra pair skew: I/O to ground = 0.015 pF, I/O to I/O = 0.007 pF

Matching high bit rate DVI, HDMI, and IDB 1394 bus requirements

Low PCB space occupation: 9 mm<sup>2</sup>

Higher reliability offered by monolithic integration

Complies with these standards

ISO 10605 (C = 330 pF, R = 330 Ω) 18 kV (air discharge) 18 kV (contact discharge)

ISO 10605 (C = 150 pF, R = 330 Ω) 18 kV (air discharge) 18 kV (contact discharge)

MIL STD883G-Method 3015-7

ISO 7637-2 Pulse 3a: VS= -150 V Pulse 3b: VS= 100 V

18 kV (air discharge)

18 kV (contact discharge)

18 kV (air discharge)

18 kV (contact discharge)

Pulse 3a: VS= -150 V

Pulse 3b: VS= 100 V

ISO 10605 (C = 330 pF, R = 330 Ω)

18 kV (air discharge)

18 kV (contact discharge)

18 kV (air discharge)

18 kV (contact discharge)

ISO 10605 (C = 150 pF, R = 330 Ω)

18 kV (air discharge)

18 kV (contact discharge)

18 kV (air discharge)

18 kV (contact discharge)

MIL STD883G-Method 3015-7

ISO 7637-2

Pulse 3a: VS= -150 V

Pulse 3b: VS= 100 V

Pulse 3a: VS= -150 V

Pulse 3b: VS= 100 V

## Recommended For You

---

### **ESDLIN1524BJ**

STMicroelectronics, Inc

SOD-323

### **BZW06-33**

STMicroelectronics, Inc

DO-15

### **ESDA6V1W5**

STMicroelectronics, Inc

SOT-353

### **SMI5T68A**

STMicroelectronics, Inc

DO-214AB

### **ESDCAN24-2BLY**

STMicroelectronics, Inc

SOT-23-3

### **LDP24A**

STMicroelectronics, Inc

R-6

### **DALC208SC6**

STMicroelectronics, Inc

SOT23-6

### **1.5KE350A**

STMicroelectronics, Inc

DO-201AD

### **ESDA14V2LY**

STMicroelectronics, Inc

SOT-23

### **ESDA5V3LY**

STMicroelectronics, Inc

SOT-23

### **SMAJ24A-TR**

STMicroelectronics, Inc

SMA

### **DA108S1RL**

STMicroelectronics, Inc

SOP8

### **ESDALC6VIP5**

STMicroelectronics, Inc

SOT-665

### **ESDAXLC6-1BU2**

STMicroelectronics, Inc

ST0201

### **HSP061-2M6**

STMicroelectronics, Inc

UQFN-6