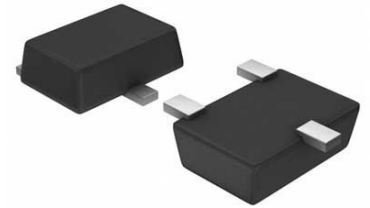


1-Channel Single ADC Delta-Sigma 128sps 16-bit Serial 6-Pin SOT-23 T/R



Images are for reference only

[Inquiry](#)

Manufacturer: [Texas Instruments, Inc](#)

Package/Case: SOT23-6

Product Type: Data Conversion ICs

RoHS: RoHS Compliant/Lead free 

Lifecycle: Active

General Description

Key Features

2.048V \pm 0.05% Accuracy

5ppm/ $^{\circ}$ C Drift

Onboard PGA

Onboard oscillator

16-bits No missing codes

0.01% FSR Maximum INL

Continuous self-calibration

Single-cycle conversion

15 to 240SPS Programmable data rate

I²C Interface, 8 available addresses

240 μ A Low current consumption

Recommended For You

ADS8326IDGKT

Texas Instruments, Inc

MSOP8

ADS7816U

Texas Instruments, Inc

SOP8

ADS1110A0IDBVR

Texas Instruments, Inc

SOT23-6

ADS1015BQDGSRQ1

Texas Instruments, Inc
VSSOP-10

ADS7805UB

Texas Instruments, Inc
SOP28

ADS774KU

Texas Instruments, Inc
SOP28

ADS7846E

Texas Instruments, Inc
SSOP16

ADS8344NB

Texas Instruments, Inc
SSOP20

ADS1254E

Texas Instruments, Inc
SSOP20

ADS7842E

Texas Instruments, Inc
SSOP28

ADS1282IPW

Texas Instruments, Inc
TSSOP-28

ADS7843E/2K5

Texas Instruments, Inc
SSOP16

ADS1226IRGVT

Texas Instruments, Inc
QFN16

ADS825E

Texas Instruments, Inc
SSOP28

ADS7825U

Texas Instruments, Inc
SOP28