
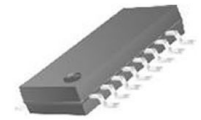


NOR Flash Serial (SPI, Dual SPI, Quad SPI) 3V 256M-bit 32M x 8 6ns 16-Pin SOIC W Tube

Manufacturer:	Winbond Electronics Corporation America
Package/Case:	SOP16
Product Type:	Memory
RoHS:	RoHS Compliant/Lead free 
Lifecycle:	Active



Images are for reference only

[Inquiry](#)

General Description

Avaq Semiconductor offers the highly versatile and reliable W25Q256JVFIQ driver, produced by Winbond Electronics Corporation America. With its multifunctional and high-performance capabilities, this component is an excellent choice for a wide range of electronic projects.

To ensure that you have all the necessary information to make the most of this component, Avaq provides a free datasheet PDF, as well as circuit diagrams, pin layouts, pin details, pin voltage ratings, and equivalent components for the W25Q256JVFIQ.

Avaq also offers free samples. Simply fill out and submit the sample request form to receive your free samples for testing. If you have any questions, please feel free to contact us at ar

Recommended For You

<p>W25X40CLSNG</p> <p>Winbond Electronics Corporation America</p> <p>SOP8</p>	<p>W25Q16JVSSIQ</p> <p>Winbond Electronics Corporation America</p> <p>SOP8</p>	<p>W25Q32JVZPIQ</p> <p>Winbond Electronics Corporation America</p> <p>WSON8</p>
<p>W25Q128JVSIM</p> <p>Winbond Electronics Corporation America</p> <p>SOP8</p>	<p>W25Q64JVSSIM TR</p> <p>Winbond Electronics Corporation America</p> <p>SOP8</p>	<p>W25Q20EWSNIG</p> <p>Winbond Electronics Corporation America</p> <p>SOP8</p>
<p>W25X40CLSNG TR</p> <p>Winbond Electronics Corporation America</p> <p>SOP8</p>	<p>W25Q32JVSFIQ</p> <p>Winbond Electronics Corporation America</p> <p>SOP-16</p>	<p>W25Q40CLSNG</p> <p>Winbond Electronics Corporation America</p> <p>SOP8</p>
<p>W25Q128JVPIQ TR</p> <p>Winbond Electronics Corporation America</p> <p>8-WDFN</p>	<p>W25Q80EWSNIG</p> <p>Winbond Electronics Corporation America</p> <p>SOP8</p>	<p>W25Q128JVEIQ</p> <p>Winbond Electronics Corporation America</p> <p>WSON8</p>
<p>W25Q16JVSNIQ TR</p> <p>Winbond Electronics Corporation America</p> <p>SOP8</p>	<p>W25Q80DVZPIG</p> <p>Winbond Electronics Corporation America</p> <p>WSON8</p>	<p>W25Q40EWSNIG</p> <p>Winbond Electronics Corporation America</p> <p>SOP8</p>