
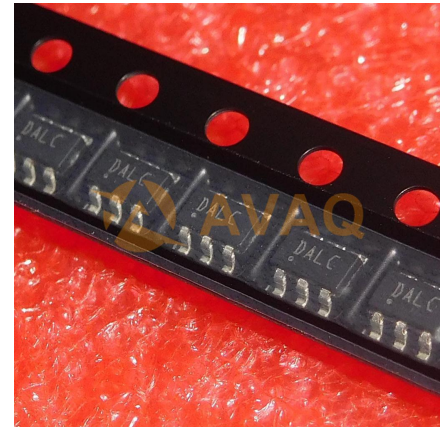


ESD Suppressor Diode Array Uni-Dir 9V 6-Pin SOT-23 T/R

Manufacturer:	STMicroelectronics, Inc
Package/Case:	SOT23-6
Product Type:	Thyristors
RoHS:	RoHS Compliant/Lead free 
Lifecycle:	Active



Images are for reference only

[Inquiry](#)

General Description

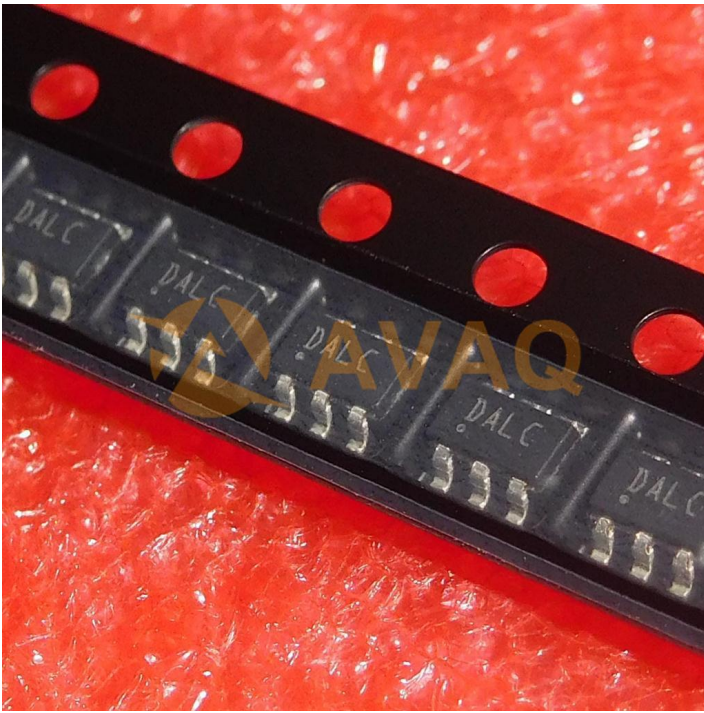
DALC208SC6 is a part number for a diode array manufactured by Diodes Incorporated. It is a high-speed switching diode array that contains four individual diodes in a single package.

Key Features

- Package Type: Surface Mount
- Configuration: Common Anode
- Maximum Continuous Forward Current: 100 mA
- Maximum Repetitive Reverse Voltage: 80 V
- Maximum Forward Voltage: 1 V
- Maximum Reverse Current: 500 nA

Application

- High-speed switching circuits
- Voltage clamping
- ESD protection



Recommended For You

ESDA6V1W5

STMicroelectronics, Inc

SOT-353

ESDA14V2LY

STMicroelectronics, Inc

SOT-23

ESDA5V3LY

STMicroelectronics, Inc

SOT-23

DA108S1RL

STMicroelectronics, Inc

SOP8

ESDALC6V1P5

STMicroelectronics, Inc

SOT-665

ESDAXLC6-1BU2

STMicroelectronics, Inc

ST0201

ESDALCL5-1BM2

STMicroelectronics, Inc

SOD882

ESDA14V2SC6

STMicroelectronics, Inc

SOT23-6

ESDALC6V1-1BU2

STMicroelectronics, Inc

ST0201

ESDA25B1RL

STMicroelectronics, Inc

SOP8

ESDALC6V1W5

STMicroelectronics, Inc

SOT353

ESDA8V2-1J

STMicroelectronics, Inc

SOD-323

ESDA5-1BF4

STMicroelectronics, Inc

SMD

ESDA14V2-2BF3

STMicroelectronics, Inc

BGA

ESDA25W

STMicroelectronics, Inc

SOT323