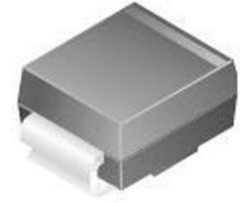


Diode TVS Single Bi-Dir 33.3V 600W Automotive 2-Pin SMB T/R



Images are for reference only

[Inquiry](#)

Manufacturer: [Littelfuse Inc](#)

Package/Case: SMB

Product Type: Thyristors

Lifecycle: Active

General Description

Products within the TPSMB series have been qualified to AEC-Q101, and are appropriate for use in Automotive applications. The TPSMB series Transient Voltage Suppression (TVS) Diode offers secondary protection of sensitive automotive and other electronics from transients induced by load dump and other transient voltage events. It's AEC-Q101 qualified, which makes it an ideal choice for protecting I/O interfaces, VCC bus and other vulnerable circuits used in automotive applications.

Key Features

- High reliability application and automotive grade AEC-Q101 qualified
- 600V and 650V Breakdown Voltage Bi-directional TVS
- 600W peak pulse power capability at 10/1000 μ s waveform, repetition rate (duty cycles):0.01%
- SMB package (DO-214AA)
- Excellent clamping capability
- IEC-61000-4-2 ESD 30kV(Air), 30kV (Contact)

Application

- IGBT Active Clamping in HVAC
- EV Converter/Inverter
- Xenon Head Lamp Ignitor for Automobile
- Battery protection in BMS (Battery Management System)
- Electronic control units
- BCMs
- CAN bus
- LIN bus
- Sensors
- Entertainment systems
- Portable devices that require high reliability

Recommended For You

TPSMA6L30A

Littelfuse Inc

DO-221AC

TPSMB43A

Littelfuse Inc

DO-214AA

TPSMC36CA

Littelfuse Inc

DO-214AB

TPSMA6L15A

Littelfuse Inc

DO-221AC

TPSMB200A

Littelfuse Inc

DO-214AA

TPSMC43CA

Littelfuse Inc

SMC

TPSMB120A

Littelfuse Inc

SMB

PESD0402-140

Littelfuse Inc

SMD

SMAJ12A

Littelfuse Inc

SMA

SMAJ58CA

Littelfuse Inc

SMA

SMBJ22A

Littelfuse Inc

SMB

SMAJ30A

Littelfuse Inc

SMA

SMBJ30A

Littelfuse Inc

SMB

SMAJ24CA

Littelfuse Inc

DO-214AC

SP3010-04UTG

Littelfuse Inc

UDFN-10