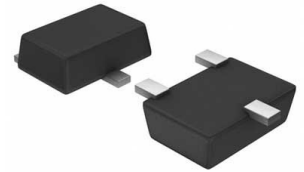


Conv DC-DC 4.5V to 17V Synchronous Step Down Single-Out 0.76V to 7V 3A 6-Pin TSOT-23 T/R



Images are for reference only

Manufacturer: [Texas Instruments, Inc](#)

Package/Case: SOT23-6

Product Type: Power Management ICs

RoHS: RoHS Compliant/Lead free 

Lifecycle: Active

[Inquiry](#)

General Description

The TPS563201 and TPS563208 are simple, easy-to-use, 3 A synchronous step-down converters in SOT-23 package.

The devices are optimized to operate with minimum external component counts and also optimized to achieve low standby current.

These switch mode power supply (SMPS) devices employ D-CAP2 mode control providing a fast transient response and supporting both low-equivalent series resistance (ESR) output capacitors such as specialty polymer and ultra-low ESR ceramic capacitors with no external compensation components.

TPS563201 operates in pulse skip mode, which maintains high efficiency during light load operation. The TPS563201 and TPS563208 are available in a 6-pin 1.6-mm × 2.9-mm SOT (DDC) package, and specified from a -40°C to 125°C junction temperature.

Key Features

TPS563201 and TPS563208 3-A Converter Integrated 95-mΩ and 57-mΩ FETs

D-CAP2? Mode Control with fast transient response

Input Voltage Range: 4.5 V to 17 V

Output Voltage Range: 0.76 V to 7 V

Pulse-skip mode (TPS563201) or Continuous Current Mode (TPS563208)

580-kHz Switching Frequency

Low Shutdown Current Less than 10 μA

2% Feedback Voltage Accuracy (25°C)

Startup from Pre-Biased Output Voltage

Cycle-by-Cycle Overcurrent Limit

Hiccup-mode Overcurrent Protection

Non-Latch UVP and TSD Protections

Fixed Soft Start: 1.0 ms

Description

The TPS563201 and TPS563208 are simple, easy-to-use, 3 A synchronous step-down converters in SOT-23 package.

The devices are optimized to operate with minimum external component counts and also optimized to achieve low standby current.

These switch mode power supply (SMPS) devices employ D-CAP2 mode control providing a fast transient response and supporting both low-equivalent series resistance (ESR) output capacitors such as specialty polymer and ultra-low ESR ceramic capacitors with no external compensation components.

TPS563201 operates in pulse skip mode, which maintains high efficiency during light load operation. The TPS563201 and TPS563208 are available in a 6-pin 1.6-mm × 2.9-mm SOT (DDC) package, and specified from a -40°C to 125°C junction temperature.

Recommended For You

TPD3S014DBVR

Texas Instruments, Inc

SOT23-6

TPS2065CDBVR

Texas Instruments, Inc

SOT23-5

TPS2557DRBT

Texas Instruments, Inc

SON8

TPS2042BDR

Texas Instruments, Inc

SOP8

TPS2051BDR

Texas Instruments, Inc

SOP8

TPL7407LPWR

Texas Instruments, Inc

TSSOP16

TPS23753APWR

Texas Instruments, Inc

TSSOP14

TPS2116DRLR

Texas Instruments, Inc

SOT5X3-8

TPS259460ARPWR

Texas Instruments, Inc

VQFN-10

TPS23751PWPR

Texas Instruments, Inc
HTSSOP16

TPS65150QPWPRQ1

Texas Instruments, Inc
HTSSOP-24

TPS2410PWR

Texas Instruments, Inc
TSSOP-14

TPS22914BYFPR

Texas Instruments, Inc
DSBGA4

TPS2115ADRBR

Texas Instruments, Inc
VSON8

TPS2113ADRBR

Texas Instruments, Inc
SON8