
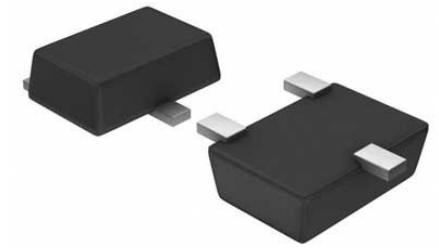


## Charge Pump STPUP 5V 110mA 6-Pin TSOT-23 T/R

<b>Manufacturer:</b>	<a href="#">Monolithic Power Systems</a>
<b>Package/Case:</b>	SOT23-6
<b>Product Type:</b>	Power Management ICs
<b>RoHS:</b>	RoHS Compliant/Lead free 
<b>Lifecycle:</b>	Active



Images are for reference only

[Inquiry](#)

### General Description

The MP9361 is a high performance, regulated charge pump converter. Its input voltage ranges from 2.8V to  $V_{out}$ . The output voltage is regulated to a fixed 5V. No external inductor is required for simplicity and compactness. Internal soft-start circuit effectively reduces the in-rush current both while start-up and mode change. The MP9361 is available in a compact TSOT23-6 package

### Recommended For You

#### MP24894GJ-Z

Monolithic Power Systems  
SOT23-6

#### MP2410AGJ-P

Monolithic Power Systems  
BGA

#### MP1010BEF-LF-Z

Monolithic Power Systems  
TSSOP20