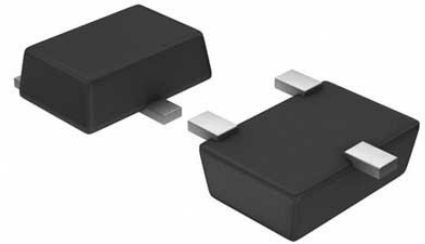


Comparator Single R-R I/P 8V 5-Pin SOT-23 T/R

Manufacturer:	Texas Instruments, Inc
Package/Case:	SOT23-5
Product Type:	Linear Displacement Sensors
Lifecycle:	Active



Images are for reference only

[Inquiry](#)

General Description

The LMC7215/LMC7215-Q1/LMC7225 are ultra low power comparators with a maximum of 1 μ A power supply current. They are designed to operate over a wide range of supply voltages, from 2V to 8V.

The LMC7215/LMC7215-Q1/LMC7225 have a greater than rail-to-rail common mode voltage range. This is a real advantage in single supply applications.

The LMC7215 features a push-pull output stage. This feature allows operation with absolute minimum amount of power consumption when driving any load.

The LMC7225 features an open drain output. By connecting an external resistor, the output of the comparator can be used as a level shifter to any desired voltage to as high as 15V.

The LMC7215/LMC7215-Q1/LMC7225 are designed for systems where low power consumption is the critical parameter.

Ensured operation over the full supply voltage range of 2.7V to 5V and rail-to-rail performance makes this comparator ideal for battery-powered applications.

Key Features

(Typical Unless Otherwise Noted)

Ultra Low Power Consumption 0.7 μ A

Wide Range of Supply Voltages 2V to 8V

Input Common-Mode Range Beyond V^+ and V

Open Collector and Push-Pull Output

High Output Current Drive: (@ $V_S = 5V$) 45 mA

Propagation Delay (@ $V_S = 5V$, 10 mV Overdrive) 25 μ s

Tiny 5-Pin SOT-23 Package

Latch-up Resistance >300 mA

LMC7215-Q1 is an Automotive Grade Product that is AEC-Q100 Grade 3 Qualified.

All trademarks are the property of their respective owners.

Recommended For You

LM311MX

Texas Instruments, Inc
SOP8

LMV7219M5

Texas Instruments, Inc
SOT23-5

LM348D

Texas Instruments, Inc
SOP-14

LM224N

Texas Instruments, Inc
DIP14

LM239J

Texas Instruments, Inc
CDIP14

LMV331M5

Texas Instruments, Inc
SOT23-5

LM393ADR

Texas Instruments, Inc
SOP8

LM293DR

Texas Instruments, Inc
SOP8

LM293D

Texas Instruments, Inc
SOP8

LMV824MEX

Texas Instruments, Inc
TSSOP

LMV358M

Texas Instruments, Inc
SOP8

LMV321M5

Texas Instruments, Inc
SOT23-5

LM741H

Texas Instruments, Inc
CAN8

LM193AH

Texas Instruments, Inc
CAN8

LM111H/NOPB

Texas Instruments, Inc
CAN8