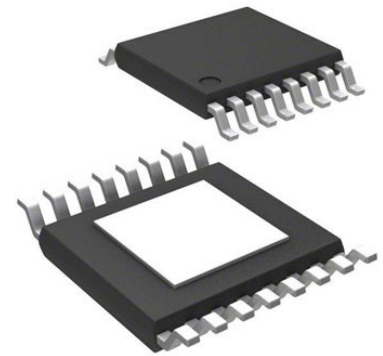


H-Bridge Motor Driver 16-Pin HTSSOP EP T/R



Images are for reference only

[Inquiry](#)

Manufacturer: [Texas Instruments, Inc](#)

Package/Case: HTSSOP16

Product Type: Driver ICs

RoHS: RoHS Compliant/Lead free 

Lifecycle: Active

General Description

This dual 4-to-1 CMOS analog multiplexer/demultiplexer is pin compatible with the 4052 function and also features injection-current effect control. This feature has excellent value in automotive applications where voltages in excess of normal supply voltages are common.

The injection-current effect control allows signals at disabled analog input channels to exceed the supply voltage without affecting the signal of the enabled analog channel. This eliminates the need for external diode/resistor networks typically used to keep the analog channel signals within the supply voltage range.

Key Features

Qualified for Automotive Applications

Injection-Current Cross Coupling <1 mV/mA (see Figure 1)

Low Crosstalk Between Switches

Pin Compatible With SN74HC4052, SN74LV4052A, and CD4052B

2-V to 6-V V

CC

Recommended For You

TL7705ACDR

Texas Instruments, Inc

SOP8

DRV8839DSSR

Texas Instruments, Inc

WSO-12

REF5025AQDRQ1

Texas Instruments, Inc

SOP8

TL431ACDR

Texas Instruments, Inc
SOP8

LM74800QDRRRQ1

Texas Instruments, Inc
WSO8-12

LP2951-50QDRGRQ1

Texas Instruments, Inc
SON-8

LMB85BDR-2-5

Texas Instruments, Inc
SOP8

TL1431QDR

Texas Instruments, Inc
SOP8

UCC28064ADR

Texas Instruments, Inc
SOP16

TPS2557DRBT

Texas Instruments, Inc
SON8

DRV8846RGER

Texas Instruments, Inc
VQFN24

TPS2042BDR

Texas Instruments, Inc
SOP8

TPS2051BDR

Texas Instruments, Inc
SOP8

TPS2116DRLR

Texas Instruments, Inc
SOT5X3-8

DRV8837DSGR

Texas Instruments, Inc
WSO8