
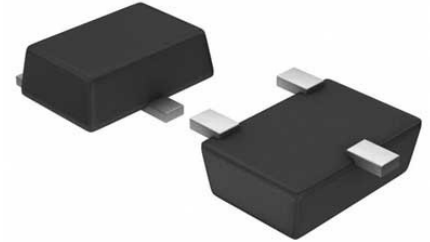


Controller 2.7V to 26.4V 8-Pin TSOT-23 T/R

Manufacturer:	Analog Devices, Inc
Package/Case:	SOT23-8
Product Type:	Power Management ICs
RoHS:	RoHS Compliant/Lead free 
Lifecycle:	Active



Images are for reference only

[Inquiry](#)

General Description

The LTC2950 is a micropower, wide input voltage range, pushbutton ON/OFF controller. The part contains a pushbutton input with independently programmable ON and OFF debounce times that control the toggling of an open drain enable output. The part also contains a simple microprocessor interface to allow for proper system housekeeping prior to power down. Under system fault conditions, an internal KILL timer ensures proper power down. The LTC2950 operates over a wide 2.7V to 26.4V input voltage range to accommodate a wide variety of input power supplies. Very low quiescent current (6 μ A typical) makes the LTC2950 ideally suited for battery powered applications. Two versions of the part are available to accommodate either positive or negative enable polarities. The parts are available in either 8-lead 3mm \times 2mm DFN or ThinSOT packages.

Key Features

- Adjustable Pushbutton On/Off Timers
- Low Supply Current: 6 μ A
- Wide Operating Voltage Range: 2.7V to 26.4V
- EN Output (LTC2950-1) Allows DC/DC Converter Control
- EN Output (LTC2950-2) Allows Circuit Breaker Control
- Simple Interface Allows Graceful μ P Shut Down
- High Input Voltage PB Pin with Internal Pull Up Resistor
- Accurate 0.6V Threshold on KILL Comparator Input
- 8-Pin 3mm \times 2mm DFN and ThinSOT™ Packages

Application

- Portable Instrumentation Meters
- Blade Servers
- Portable Customer Service PDA
- Desktop and Notebook Computers

Recommended For You

LTC4412ES6

Analog Devices, Inc
SOT23-6

LTC4259ACGW-1

Analog Devices, Inc
SSOP36

LTC4259ACGW

Analog Devices, Inc
SSOP36

LTC1530IS8

Analog Devices, Inc
SOP8

LTC4252-2IMS

Analog Devices, Inc
MSOP10

LTC4412ES6#PBF

Analog Devices, Inc
SOT23-6

LTC4412ES6#TRPBF

Analog Devices, Inc
SOT23-6

LTC2942CDCB#TRMPBF

Analog Devices, Inc
DFN-6

LT1054IN8

Analog Devices, Inc
DIP-8

LTC4416EMS#PBF

Analog Devices, Inc
MSOP10

LTC4357IMS8

Analog Devices, Inc
MSOP8

LTC4414IMS8#PBF

Analog Devices, Inc
MSOP8

LTC4413EDD

Analog Devices, Inc
DFN10

LT3469EIS8#TRMPBF

Analog Devices, Inc
SOT23-8

LTC4412HVIS6

Analog Devices, Inc
SOT23-6