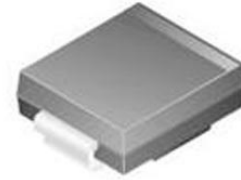


Diode TVS Single Uni-Dir 12V 1.5KW 2-Pin SMC

Images are for reference only

[Inquiry](#)

Manufacturer: [Taiwan Semiconductor](#)

Package/Case: SMC

Product Type: Thyristors

Lifecycle: Active

General Description

1500 Watt Peak Pulse Power VOLTAGE-5.0 TO 440 Volts

Key Features

Halogen-Free and RoHS compliant

For surface mount applications in order to optimize board space

Low profile package

Built-in strain relief

Glass passivated junction

Low inductance

Excellent clamping capability

Repetition Rate (duty cycle): 0.05%

Fast response time: typically less than 1.0ps from 0 Volts to V(BR) min.

Typical IR less than 1mA above 10V

High temperature soldering: 250 degrees C/10 seconds at terminals

Plastic package has Underwriters Laboratory Flammability 94V-O

Recommended For You

SMBJ12CA

Taiwan Semiconductor

SMB

SMCJ33CA

Taiwan Semiconductor

SMC

SMCJ15A

Taiwan Semiconductor

SMC

P6SMB36A

Taiwan Semiconductor

SMB

SMBJ14A

Taiwan Semiconductor

SMB

P6SMB62CA

Taiwan Semiconductor

DO-214AA

SMCJ18A

Taiwan Semiconductor

SMC(DO-214AB)

SMCJ15CA

Taiwan Semiconductor

SMC

SMCJ78CA

Taiwan Semiconductor

SMC

SMCJ150A

Taiwan Semiconductor

SMC(DO-214AB)

P6KE200CA

Taiwan Semiconductor

DO-15

P6KE51A

Taiwan Semiconductor

DO-15

P6KE36A

Taiwan Semiconductor

DO-15

P6KE100A

Taiwan Semiconductor

DO-15

P6KE220A

Taiwan Semiconductor

DO-15