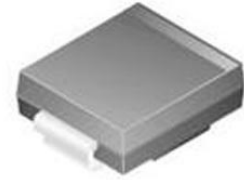


TVS Diode Single Bi-Dir 24V 1.5KW 2-Pin SMC T/R

Images are for reference only

[Inquiry](#)

Manufacturer: [Littelfuse Inc](#)

Package/Case: SMC

Product Type: Thyristors

Lifecycle: Active

General Description

1500 Watt Peak Pulse Power VOLTAGE-5.0 TO 440 Volts

Key Features

Halogen-Free and RoHS compliant

For surface mount applications in order to optimize board space

Low profile package

Built-in strain relief

Glass passivated junction

Low inductance

Excellent clamping capability

Repetition Rate (duty cycle): 0.05%

Fast response time: typically less than 1.0ps from 0 Volts to V(BR) min.

Typical IR less than 1mA above 10V

High temperature soldering: 250 degrees C/10 seconds at terminals

Plastic package has Underwriters Laboratory Flammability 94V-O

Recommended For You

SMAJ12A

Littelfuse Inc

SMA

SMAJ58CA

Littelfuse Inc

SMA

SMBJ22A

Littelfuse Inc

SMB

SMAJ30A

Littelfuse Inc

SMA

SMBJ30A

Littelfuse Inc

SMB

SMAJ24CA

Littelfuse Inc

DO-214AC

SMBJ18A

Littelfuse Inc

SMB

SMBJ24A

Littelfuse Inc

SMB

SMBJ36CA

Littelfuse Inc

SMB

SMAJ12CA

Littelfuse Inc

SMA

SMCJ30CA

Littelfuse Inc

SMC

SMAJ28CA

Littelfuse Inc

SMA

SMBJ26CA

Littelfuse Inc

SMB

SMBJ17A

Littelfuse Inc

SMB

SMBJ20A

Littelfuse Inc

SMB