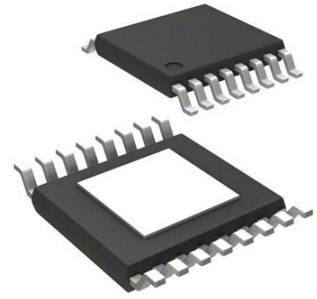


## Full Bridge Motor Driver 32V 16-Pin HTSSOP EP Tube

<b>Manufacturer:</b>	<a href="#">Texas Instruments, Inc</a>
<b>Package/Case:</b>	HTSSOP16
<b>Product Type:</b>	Driver ICs
<b>RoHS:</b>	RoHS Compliant/Lead free 
<b>Lifecycle:</b>	Active



Images are for reference only

[Inquiry](#)

### General Description

Avaq Semiconductor offers the highly versatile and reliable DRV8801PWP driver, produced by Texas Instruments, Inc. With its multifunctional and high-performance capabilities, this component is an excellent choice for a wide range of electronic projects.

To ensure that you have all the necessary information to make the most of this component, Avaq provides a free datasheet PDF, as well as circuit diagrams, pin layouts, pin details, pin voltage ratings, and equivalent components for the DRV8801PWP.

Avaq also offers free samples. Simply fill out and submit the sample request form to receive your free samples for testing. If you have any questions, please feel free to contact us at ar

### Recommended For You

<b>TL7705ACDR</b>	<b>DRV8839DSSR</b>	<b>REF5025AQDRQ1</b>
Texas Instruments, Inc	Texas Instruments, Inc	Texas Instruments, Inc
SOP8	WSON-12	SOP8
<b>TL431ACDR</b>	<b>LM74800QDRRRQ1</b>	<b>LP2951-50QDRGRQ1</b>
Texas Instruments, Inc	Texas Instruments, Inc	Texas Instruments, Inc
SOP8	WSON-12	SON-8
<b>LMB85BDR-2-5</b>	<b>TL1431QDR</b>	<b>UCC28064ADR</b>
Texas Instruments, Inc	Texas Instruments, Inc	Texas Instruments, Inc
SOP8	SOP8	SOP16
<b>TPS2557DRBT</b>	<b>DRV8846RGER</b>	<b>TPS2042BDR</b>
Texas Instruments, Inc	Texas Instruments, Inc	Texas Instruments, Inc
SON8	VQFN24	SOP8
<b>TPS2051BDR</b>	<b>TPS2116DRLR</b>	<b>DRV8837DSGR</b>
Texas Instruments, Inc	Texas Instruments, Inc	Texas Instruments, Inc
SOP8	SOT5X3-8	WSON8