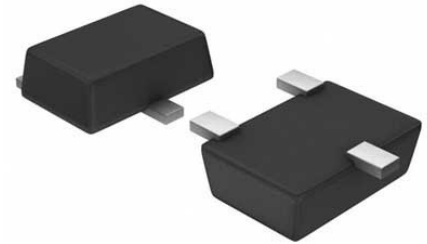


## Comparator Single R-R I/P 5.5V 5-Pin SOT-23 T/R



Images are for reference only

[Inquiry](#)

<b>Manufacturer:</b>	<a href="#">Texas Instruments, Inc</a>
<b>Package/Case:</b>	SOT23-5
<b>Product Type:</b>	Linear Displacement Sensors
<b>Lifecycle:</b>	Active

### General Description

The LMV7235 and LMV7239 are ultra low power, low voltage, 75-ns comparators. They are ensured to operate over the full supply voltage range of 2.7 V to 5.5 V. These devices achieve a 75-ns propagation delay while consuming only 65  $\mu$ A of supply current at 5V.

The LMV7235 and LMV7239 have a greater than rail-to-rail common-mode voltage range. The input common mode voltage range extends 200 mV below ground and 200 mV above supply, allowing both ground and supply sensing.

The LMV7235 features an open drain output. By connecting an external resistor, the output of the comparator can be used as a level shifter.

The LMV7239 features a push-pull output stage. This feature allows operation without the need of an external pullup resistor.

The LMV7235 and LMV7239 are available in the 5-pin SC70 and 5-pin SOT-23 packages, which are ideal for systems where small size and low power is critical.

### Key Features

75ns Propagation delay

65 $\mu$ A Low supply current

### Recommended For You

#### LMB11MX

Texas Instruments, Inc

SOP8

#### LMV7219M5

Texas Instruments, Inc

SOT23-5

#### LMB48D

Texas Instruments, Inc

SOP-14

#### LM224N

Texas Instruments, Inc

DIP14

#### LM239J

Texas Instruments, Inc

CDIP14

#### LMV331M5

Texas Instruments, Inc

SOT23-5

**LM393ADR**

Texas Instruments, Inc  
SOP8

**LM293DR**

Texas Instruments, Inc  
SOP8

**LM293D**

Texas Instruments, Inc  
SOP8

**LMV824MIX**

Texas Instruments, Inc  
TSSOP

**LMV358M**

Texas Instruments, Inc  
SOP8

**LMV321M5**

Texas Instruments, Inc  
SOT23-5

**LM741H**

Texas Instruments, Inc  
CAN8

**LM193AH**

Texas Instruments, Inc  
CAN8

**LM111H/NOPB**

Texas Instruments, Inc  
CAN8