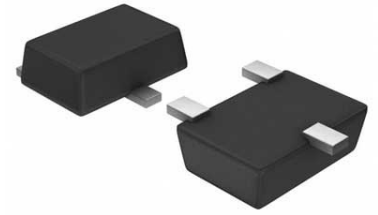


Op Amp Single GP R-R I/O 5.5V Automotive Medical 5-Pin SOT-23 T/R



Images are for reference only

[Inquiry](#)

Manufacturer: [Texas Instruments, Inc](#)

Package/Case: SOT23-5

Product Type: Amplifier ICs

RoHS: RoHS Compliant/Lead free 

Lifecycle: Active

General Description

The OPAx348 series of amplifiers are single-supply, low-power, CMOS operational amplifiers. Featuring an extended bandwidth of 1 MHz, and a supply current of 45 μ A, the OPAx348 series is useful for low-power applications on single supplies of 2.1 V to 5.5 V.

A low supply current of 45 μ A and an input bias current of 0.5 pA, makes the OPAx348 series an optimal candidate for low-power applications such as smoke detectors and other high-impedance sensors.

The OPA348 is available in the miniature 5-pin SC70 (SOT), 5-pin SOT-23 (SOT), and 8-pin SO (SOIC) packages. The OPA2348 is available in 8-pin SOT-23 (SOT) and 8-pin SO (SOIC) packages, and the OPA4348 is offered in space-saving 14-pin TSSOP and 14-pin SO (SOIC) packages. The extended temperature range of -40°C to $+125^{\circ}\text{C}$ over all supply voltages offers design flexibility.

Key Features

Qualified for Automotive Applications

AEC-Q100 Qualified With the Following Results:

Device Temperature Grade 1: -40°C to +125°C Ambient Operating Temperature Range

Device HBM ESD Classification Level 2

Device CDM ESD Classification Level C4B

Low Quiescent Current (IQ): 45 μ A (Typ)

Low Cost

Rail-to-Rail Input and Output

Single Supply: 2.1 V to 5.5 V

Input Bias Current: 0.5 pA (Typ)

High Speed: Power With Bandwidth: 1 MHz

APPLICATIONS

Portable Equipment

Battery-Powered Equipment

Smoke Alarms

CO Detectors

HEV/EV and Power Train

Infotainment and Cluster

Medical Instrumentation

All other trademarks are the property of their respective owners

Description

The OPAx348-Q1 series of devices are single-supply, low-power CMOS operational amplifiers. Featuring an extended bandwidth of 1 MHz and a supply current of 45 μ A, the OPAx348-Q1 family of devices is useful for low-power applications on single supplies of 2.1 V to 5.5 V.

Low supply current of 45 μ A and an input bias current of 0.5 pA make the OPAx348-Q1 family of devices an optimal candidate for low-power, high-impedance applications such as smoke detectors and other sensors.

The OPA348-Q1 device is available in both the SOT23-5 (DBV) and the SOIC (D) packages. The OPA2348-Q1 device is available in the SOIC-8 (D) package. The OPA4348-Q1 device is available in the TSSOP-14 (PW) package. The automotive temperature range of -40°C to +125°C over all supply voltages offers additional design flexibility.

Recommended For You

OPA445BM

Texas Instruments, Inc

CAN

OPA1611AIDR

Texas Instruments, Inc

SOP8

OPA388QDBVRQ1

Texas Instruments, Inc

SOT23-5

OPA2365AQDRQ1

Texas Instruments, Inc
SOP8

OPA334AIDBVR

Texas Instruments, Inc
SOT23-6

OPA2835IDGSR

Texas Instruments, Inc
MSOP10

OPA656U

Texas Instruments, Inc
SOP8

OPA360AIDCKR

Texas Instruments, Inc
SC70-6

LMI11H/NOPB

Texas Instruments, Inc
CAN8

OPA353UA

Texas Instruments, Inc
SOP8

LMI3700MX/NOPB

Texas Instruments, Inc
SOP16

OPA633KP

Texas Instruments, Inc
DIP8

OPA453FAKTWT

Texas Instruments, Inc
TO263-7

OPA4251UA

Texas Instruments, Inc
SOP14

LMV321M5X/NOPB

Texas Instruments, Inc
SOT23-5