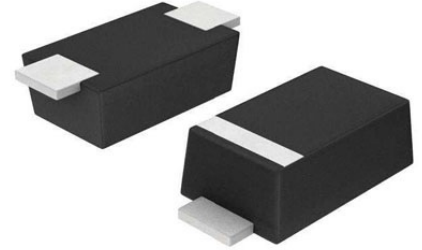


Diode TVS Single Uni-Dir 6.5V 200W 2-Pin SOD-123F T/R**Manufacturer:** [Littelfuse Inc](#)**Package/Case:** SOD-123FL**Product Type:** Thyristors**Lifecycle:** Active

Images are for reference only

[Inquiry](#)**General Description**

The SMF series is designed specifically to protect sensitive electronic equipment from voltage transients induced by lightning and other transient voltage events. SMF package is 50% smaller in footprint when compare to SMA package and delivering one of the low height profiles (1.1mm) in the industry.

Key Features

200W peak pulsepower capability at 10/1000µs waveform, repetition rate (duty cycle): 0.01%

Compatible with industrial standard package SOD-123FL

Low profile: maximum height of 1.1mm.

Low inductance, excellent clamping capability

For surface mounted applications to optimize board space

High temperature to reflow soldering guaranteed: 260°C/430sec

Typical failure mode is short from over-specified voltage or current

Whisker test is conducted based on JEDEC JESD201A per its table 4a and 4c

IEC-61000-4-2 ESD 30kV(Air), 30kV (Contact)

ESD protection of data lines in accordance with IEC 61000-4-2

EFT protection of data lines in accordance with IEC 61000-4-4

Fast response time: typically less than 1.0ns from 0 Volts to VBR min

Glass passivated junction

Built-in strain relief

Plastic package is flammability rated V-0 per Underwriters Laboratories

Meet MSL level1, per J-STD-020, LF maximum peak of 260°C

Matte tin lead-free plated

Halogen-free and RoHS compliant

Pb-free E3 means 2nd level interconnect is Pb-free and the terminal finish material is tin(Sn) (IPC/ JEDEC J-STD609A.01)

UL Recognized to UL 497B

Application

SMF devices are ideal for the protection of I/O interfaces, VCC bus and other vulnerable circuit used in cellular phones, portable devices, business machines, power supplies and other consumer applications.

Recommended For You

SMAJ12A

Littelfuse Inc

SMA

SMAJ58CA

Littelfuse Inc

SMA

SMBJ22A

Littelfuse Inc

SMB

SMAJ30A

Littelfuse Inc

SMA

SMBJ30A

Littelfuse Inc

SMB

SMAJ24CA

Littelfuse Inc

DO-214AC

SMBJ18A

Littelfuse Inc

SMB

SMBJ24A

Littelfuse Inc

SMB

SMBJ36CA

Littelfuse Inc

SMB

SMAJ12CA

Littelfuse Inc

SMA

SMCJ30CA

Littelfuse Inc

SMC

SMAJ28CA

Littelfuse Inc

SMA

SMBJ26CA

Littelfuse Inc

SMB

SMBJ17A

Littelfuse Inc

SMB

SMBJ20A

Littelfuse Inc

SMB