

LED DRVR Automotive 6-Pin SC-74 T/R

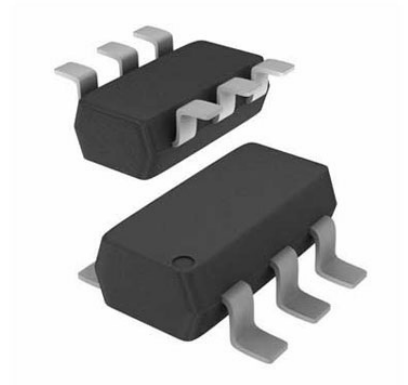
Manufacturer: [Infineon Technologies Corporation](#)

Package/Case: SC-74

Product Type: Optoelectronics

RoHS: RoHS Compliant/Lead free 

Lifecycle: Active



Images are for reference only

[Inquiry](#)

General Description

The BCR420U linear LED driver IC is tailored to drive low and mid power LEDs in general and automotive lighting applications.

Key Features

LED drive current preset to 10mA

Output current adjustable by resistor up to 150mA

Supply voltage up to 40V

Low side current control, NPN transistor power stage

PWM dimmable by external transistor

Up to 1000mW power dissipation in a small SC74 package

Negative thermal coefficient reduces output current at higher temperatures

Automotive qualified according to AEC Q101

Driving current always under control for homogenous light output

Longer lifetime of the LEDs due to reduced output current at higher temperatures (negative thermal coefficient)

Easy paralleling of drivers to increase current

Contributes to longevity and reliability of LED system

Application

LED strips, signage and channel letters

Commercial, architectural and residential lighting

Shop, ship, train and aircraft lighting

Automotive interior lighting

Recommended For You

BCR421UE6327HTSA1

Infineon Technologies Corporation
PG-SC74-6

BCR402UE6327HTSA1

Infineon Technologies Corporation
PG-SC74-6

BCR401UE6327HTSA1

Infineon Technologies Corporation
SC-74

BCR601XUMA1

Infineon Technologies Corporation
SOP8

BCR320UE6327HTSA1

Infineon Technologies Corporation
PG-SC74-6

BCR321UE6327HTSA1

Infineon Technologies Corporation
PG-SC74-6

BCR450E6327HTSA1

Infineon Technologies Corporation
SC-74-6

BCR402UE6433HTMA1

Infineon Technologies Corporation
BGA

BTS5590G

Infineon Technologies Corporation
SSOP36

ICB1FL02G

Infineon Technologies Corporation
SOP18

BTS5662E

Infineon Technologies Corporation
SSOP36

ICL5101

Infineon Technologies Corporation
SOP16

ICB2FL01G

Infineon Technologies Corporation
SOP19

BTS5576G

Infineon Technologies Corporation
SSOP36

ILD8150EXUMA1

Infineon Technologies Corporation
SOP8