

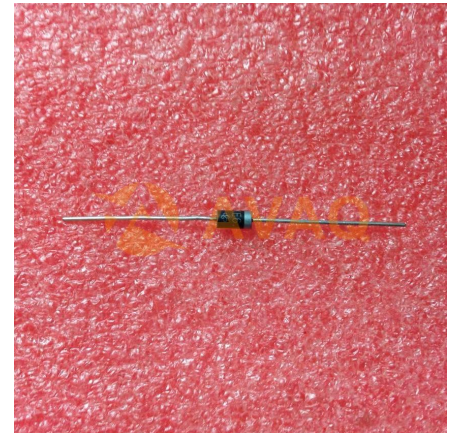
TVS Diode Single Uni-Dir 5.8V 600W 2-Pin DO-15 T/R

Manufacturer: [Littelfuse Inc](#)

Package/Case: DO-15

Product Type: Thyristors

Lifecycle: Active



Images are for reference only

[Inquiry](#)

General Description

Transil diodes provide high overvoltage protection by clamping action. Their instantaneous response to transient overvoltages makes them particularly suited to protect voltage sensitive devices such as MOS Technology and low voltage supplied IC's.

Key Features

Peakpulsepower:600W(10/1000μs)

Stand-offvoltage6.8to440V

Unidirectionalandbidirectionaltypes

Lowclampingfactor

Fastresponsetime

ULrecognized

Complieswiththefollowingstandards

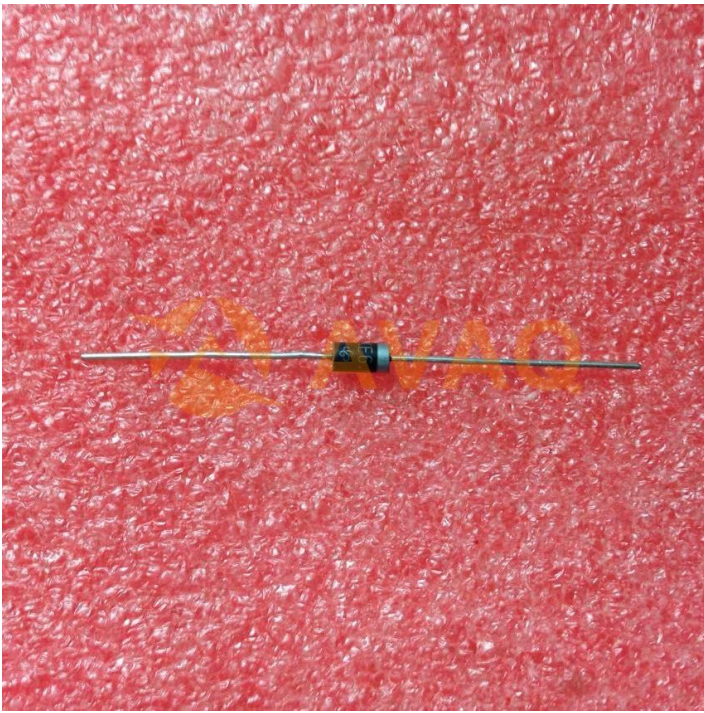
IEC61000-4-2level4

15kV(airdischarge)

8kV(contactdischarge)

MILSTD883G,method3015-7Class3

HBM(humanbodymodel)



Recommended For You

P6KE6.8CA

Littelfuse Inc

DO-15

P6KE200A

Littelfuse Inc

DO-15

P6KE20CA

Littelfuse Inc

DO-15

P6SMB250A

Littelfuse Inc

SMB(DO-214AA)

P6SMB51A

Littelfuse Inc

DO-214AA

P6KE33CA

Littelfuse Inc

DO-15

P6KE24CA

Littelfuse Inc

DO-15

P6SMB62A

Littelfuse Inc

DO-214AA

P6KE15A

Littelfuse Inc

DO-15

P6KE33A

Littelfuse Inc

DO-15

P6KE12CA

Littelfuse Inc

DO-15

SZP6SMB33CAT3G

Littelfuse Inc

SMB

P6KE16CA

Littelfuse Inc

DO-15

P6SMB27CA

Littelfuse Inc

DO-214AA

P6SMB480CA

Littelfuse Inc

SMB