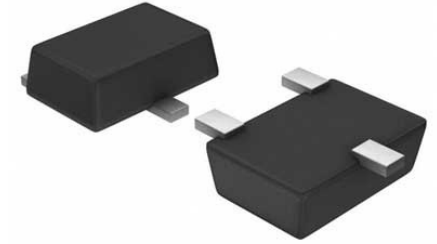


OR Gate 1-Element 2-IN CMOS 5-Pin SSOP T/R**Manufacturer:** [ROHM Semiconductor](#)**Package/Case:** SOT23-5**Product Type:** Logic ICs**RoHS:** RoHS Compliant/Lead free **Lifecycle:** Active

Images are for reference only

[Inquiry](#)**General Description**

Logic gate series of ROHM that is compatible with 4S, 4000B series corresponds to high power supply voltage and has wide lineup with all kinds of function. It is able to be used with various applications.

Key Features

Low power consumption

High noise immunity

Wide operating supply voltage range

High input impedance

High fan out

Input can be directly driven 2 L-TTL inputs or 1 LS-TTL

Buffered output

Recommended For You**BU4S81G2-TR**

ROHM Semiconductor

SOT23-5

BU4S11G2-TR

ROHM Semiconductor

SOT23-5

BU4SU69G2-TR

ROHM Semiconductor

SOT23-5

BU4S584G2-TR

ROHM Semiconductor

SOT23-5

BU2090FS-E2

ROHM Semiconductor

SSOP16

BU1851G UW-E2

ROHM Semiconductor

BGA

BU1852GXW-E2

ROHM Semiconductor

UBGA035W030

BU2092F-E2

ROHM Semiconductor

SOP

BU2090F-E2

ROHM Semiconductor

SOP

BU1852G UW-E2

ROHM Semiconductor

BGA

BU2092FV-E2

ROHM Semiconductor

TSSOP20

BU2098F-E2

ROHM Semiconductor

SOP

BD7LS08G-CTL

ROHM Semiconductor

5-SSOP

BD7LS125G-CTL

ROHM Semiconductor

AN

BD7LS04G-CTL

ROHM Semiconductor

BGA