
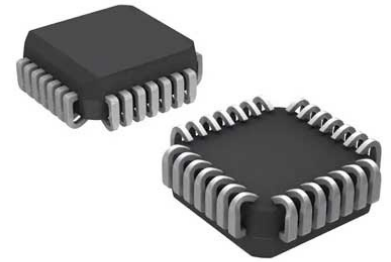


## NOR Flash Parallel 5V 4M-bit 512K x 8 70ns 32-Pin PLCC Tube

<b>Manufacturer:</b>	<a href="#">Microchip Technology, Inc</a>
<b>Package/Case:</b>	PLCC
<b>Product Type:</b>	Memory
<b>RoHS:</b>	RoHS Compliant/Lead free 
<b>Lifecycle:</b>	Active



Images are for reference only

[Inquiry](#)

### General Description

The SST39SF040 is a CMOS Multi-Purpose Flash (MPF) manufactured with SST proprietary, high performance CMOS SuperFlash technology. The split-gate cell design and thick oxide tunneling injector attain better reliability and manufacturability compared with alternate approaches. The SST39SF040 writes (Program or Erase) with a 4.5-5.5V power supply, and conforms to JEDEC standard pinouts for x8 memories.

### Key Features

Superior reliability - 100000 cycles (typical) endurance and greater than 100-year data retention

Low power consumption

Sector-erase capability - Uniform 4kB sectors

Latched address and data

Automatic write timing - Internal VPP generation

Fast erase and byte-program

End-of-write detection

### Recommended For You

#### [SST39VF1602-70-4I-EKE](#)

Microchip Technology, Inc

TSOP48

#### [SST25VF080B-50-4C-S2AF](#)

Microchip Technology, Inc

SOP8

#### [AT24C64D-SSHM-T](#)

Microchip Technology, Inc

SOP8

**AT25256B-SSHL-T**

Microchip Technology, Inc  
SOP8

**AT24C08C-SSHM-T**

Microchip Technology, Inc  
SOP8

**AT24C256C-SSHL-T**

Microchip Technology, Inc  
SOP8

**AT24C32D-SSHM-T**

Microchip Technology, Inc  
SOP8

**AT24C02C-SSHM-T**

Microchip Technology, Inc  
SOP8

**AT24C16C-SSHM-B**

Microchip Technology, Inc  
SOP-8

**AT93C56B-SSHM-T**

Microchip Technology, Inc  
SOP8

**AT25040B-SSHL-B**

Microchip Technology, Inc  
SOP-8

**AT25128B-SSPDGV-T**

Microchip Technology, Inc  
SOP8

**SST39SF040-70-4C-WHE**

Microchip Technology, Inc  
TSOP

**SST39SF010A-70-4C-NHE**

Microchip Technology, Inc  
PLCC32

**SST26VF016-80-5I-S2AE**

Microchip Technology, Inc  
SOP8