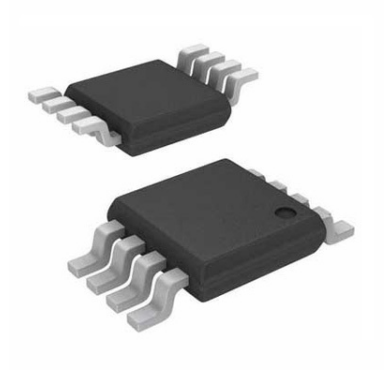


## EEPROM Serial-SPI 256K-bit 32K x 8 2.5V/3.3V/5V 8-Pin TSSOP Tube



Images are for reference only

[Inquiry](#)

**Manufacturer:** [Microchip Technology, Inc](#)

**Package/Case:** TSSOP8

**Product Type:** Memory

**RoHS:** RoHS Compliant/Lead free 

**Lifecycle:** Active

### General Description

The Microchip 25AA256 is a 256 Kb Serial EEPROM utilizing the industry standard Serial Peripheral Interface (SPI) compatible serial bus. The device is organized as one block of 32,768 x 8-bit and is optimized for use in consumer electronics, industrial, medical, and automotive applications where reliable and dependable nonvolatile memory storage is essential. Software write protection allows the user to protect ¼, ½, or the entire memory array. A hardware write protect pin is also provided, which additionally protects against inadvertent writes to the status register. The EEPROM is available in a variety of space-saving packaging options.

## Key Features

32,768 x 8-bit (256 Kbit)

Supports SPI modes 0 and 3

Up to 10 MHz clock frequency

Self-Timed Erase and Write Cycles (5 ms max.)

Read current: 6 mA (Max) at 10 MHz

Write current: 5 mA (Max) at 5.5 V

Standby current: 5  $\mu$ A (Max) at 5.5 V

Block Write Protection: Protect 1/4, 1/2 or Entire Array

More than 1 million erase/write cycles

Data retention > 200 years

Industrial (I): -40°C to 85°C

Extended (E): -40°C to +125°C

Automotive AECQ-100 Qualified1

Factory Programming Available

Available in standard packages including 8-lead PDIP, SOIC, SOIJ, and TSSOP, as well as 5x6mm DFN

## Recommended For You

---

### **SST25VF080B-50-4C-S2AF**

Microchip Technology, Inc

SOP8

### **AT25256B-SSHL-T**

Microchip Technology, Inc

SOP8

### **AT24C256C-SSHL-T**

Microchip Technology, Inc

SOP8

### **AT25040B-SSHL-B**

Microchip Technology, Inc

SOP-8

### **AT25128B-SSPDGV-T**

Microchip Technology, Inc

SOP8

### **23K256-I/SN**

Microchip Technology, Inc

SOP8

### **AT27C256R-70JU**

Microchip Technology, Inc

PLCC32

### **25AA1024-I/SM**

Microchip Technology, Inc

SOP8

### **AT25320B-SSHL-T**

Microchip Technology, Inc

SOP8

### **25AA1024T-I/MF**

Microchip Technology, Inc

DFN-8

### **AT25512N-SH-T**

Microchip Technology, Inc

SOP8

### **25LC1024-I/SM**

Microchip Technology, Inc

SOP8

**25AA256T-I/SN**

Microchip Technology, Inc

SOP8

**25LC640A-I/SN**

Microchip Technology, Inc

SOP8

**AT25640B-SSHL-T**

Microchip Technology, Inc

SOP8