

NIS6420 Evaluation Board User's Manual



EVBUM2796/D

Instructions

- Remove All Jumpers from the Headers if there are any in Place
- Connect an Ohmmeter across the Rlim Measurement Test Points and set it to 10 k Ω with a small Screwdriver
- Connect a DC Supply from Vin to GND and apply 12 V
- Check that Vout = 12 V, Ven ~ 3.2 V and the green LEDs are On
- Connect Oscilloscope Voltage Probes to Vin (Ch1), Vout (Ch2), and EN (Ch4). For Ch3 connect a Current Probe in the Main Current Path

ON Semiconductor®

www.onsemi.com

EVAl BOARD USER'S MANUAL

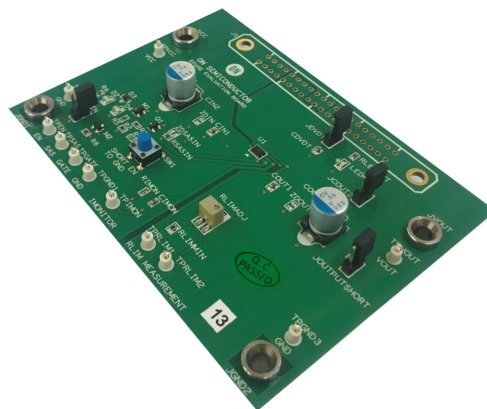


Figure 1. Board Photo

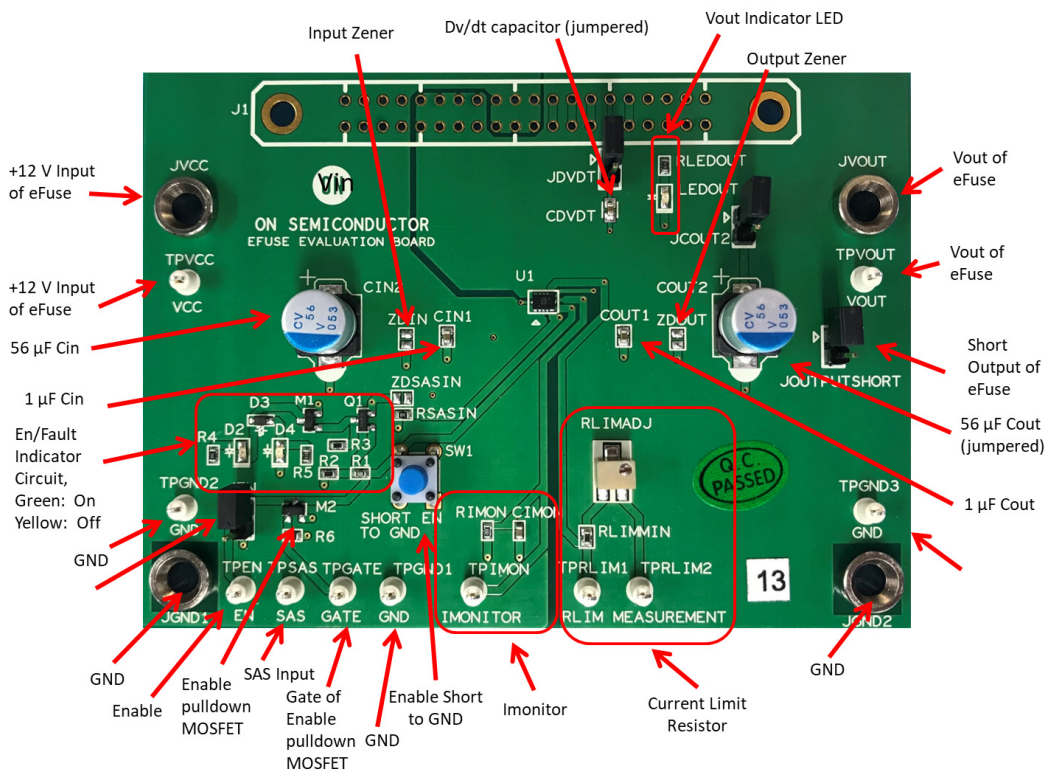


Figure 2. Features of the Evaluation Board

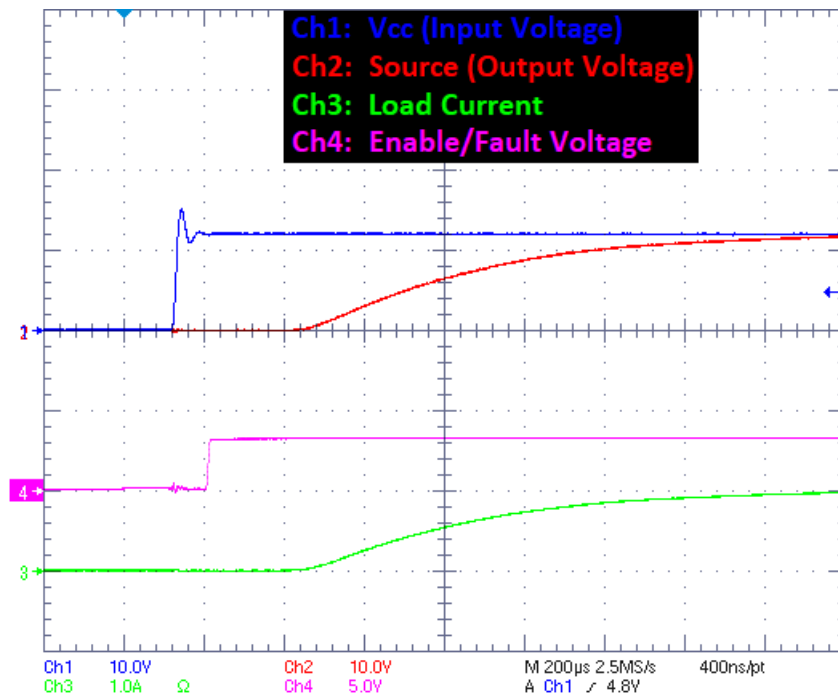


Figure 3. Hot Plug into 12 Ω Load with dvdt Pin Floating to show Controlled Output Voltage Ramp

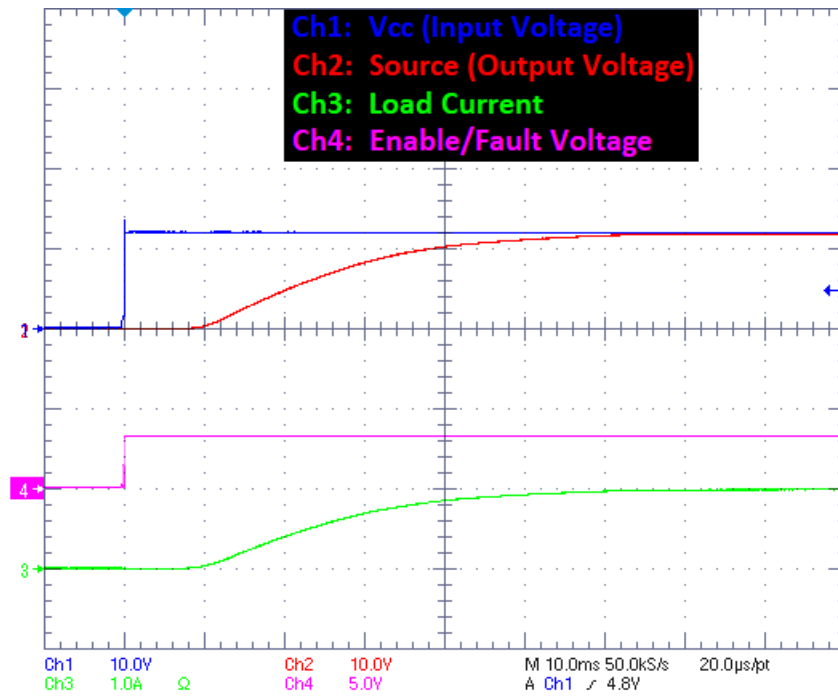


Figure 4. Hot Plug into 12 Ω Load with Cdvd of 2.2 nF engaged to show Slower Controlled Output Voltage Ramp

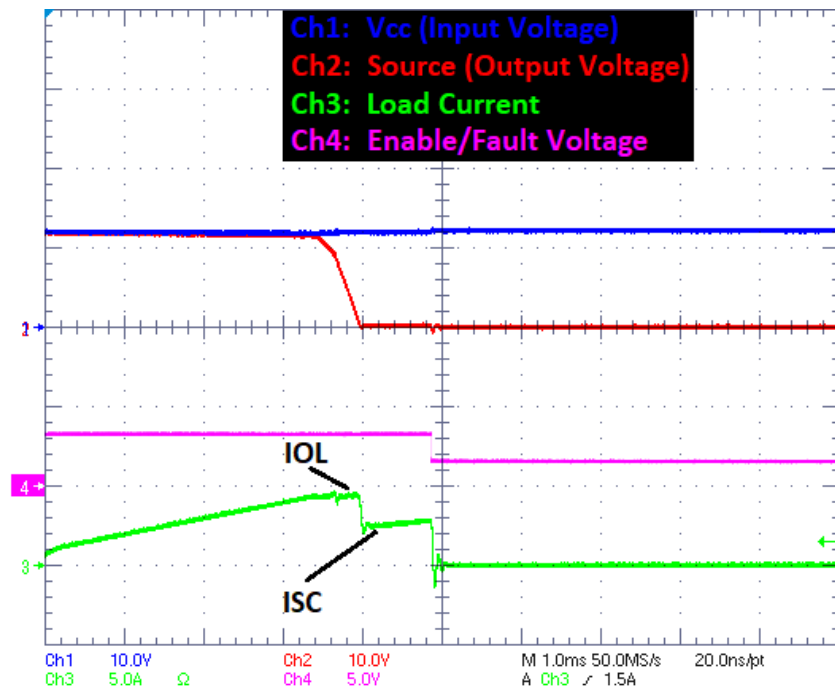


Figure 5. Drawing Current with an Electronic Load to observe Overload Current Limit (IOL) and Short Circuit Current Limit (ISC)

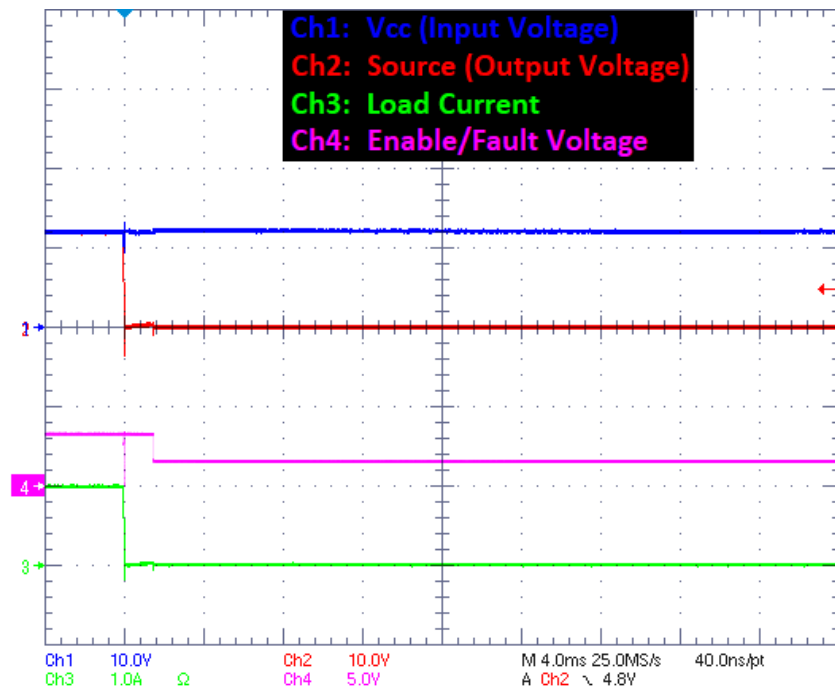


Figure 6. Sudden Short from Output to GND with a Latching Part (NIS6420MT1)

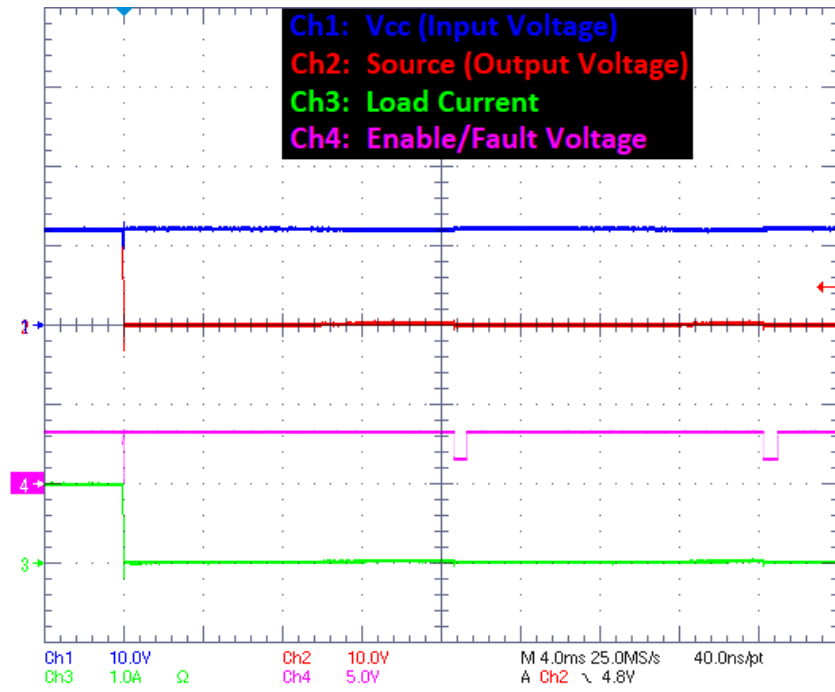


Figure 7. Sudden Short from Output to GND with an Auto-Retry Part (NIS6420MT2)

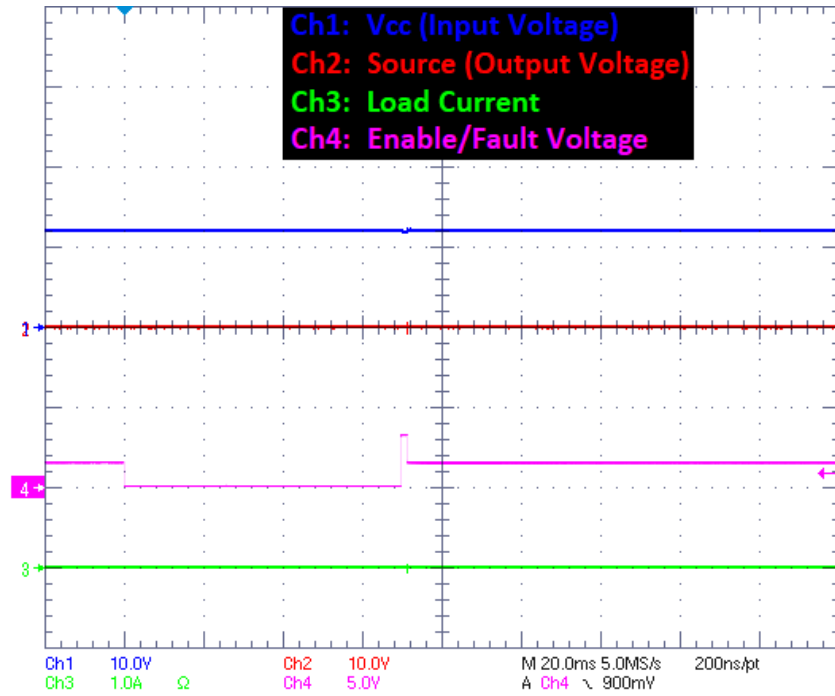


Figure 8. Bringing EN from Mid Level to GND with Vout still shorted to GND with a Latching Part (NIS6420MT1)

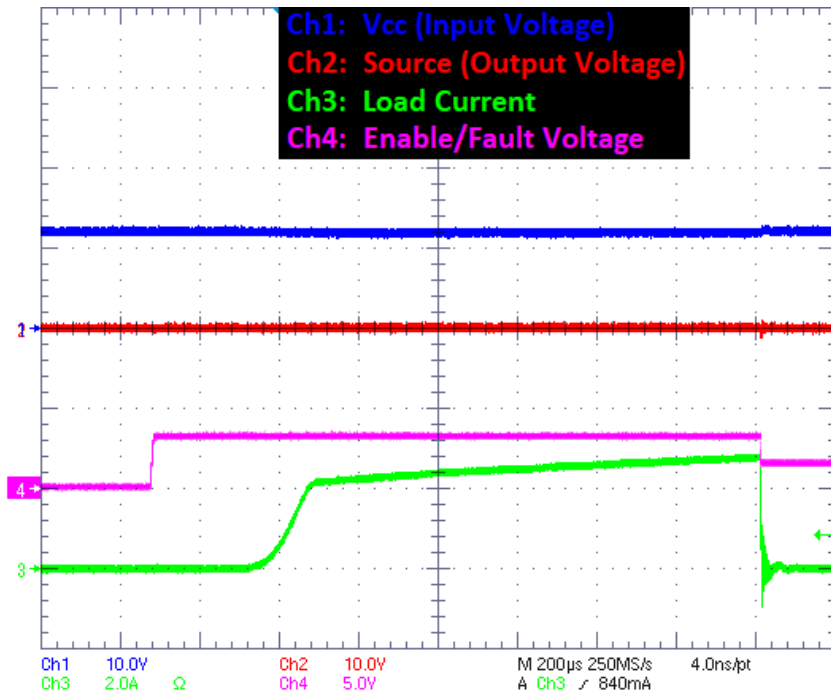


Figure 9. Zoomed In Version of previous Waveform, showing Current while Attempting to Turn On into a Short using the EN Pin

SCHEMATIC

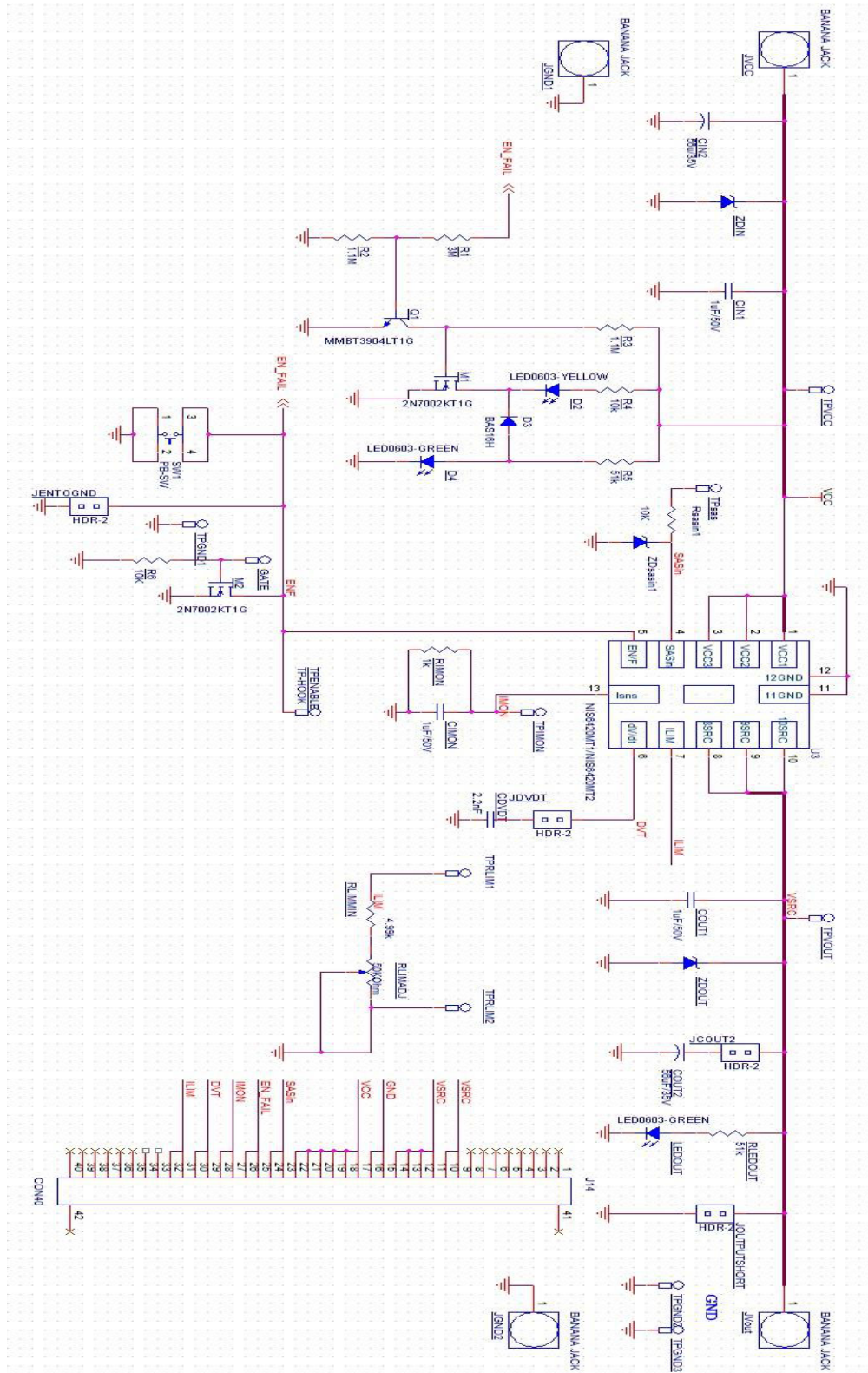


Figure 10. Evaluation Board Schematic

EVBUM2796/D

BILL OF MATERIAL

Item	Qty	Reference	Part	DigikeyPN	Manufacturer	Manufacturer Part #	Notes
1	1	CDVDT	2.2nF / 50V 0603	587-4469-1-ND	Taiyo Yuden	UMJ107AB7222K AHT	
2	3	CIMON, COUT1, CIN1	1 μ F / 50V 0603	587-2400-1-ND	Taiyo Yuden	UMK107BJ105KA -T	
3	2	CIN2, COUT2	56 μ F / 35V	493-4385-1-ND	Nichicon	PCV1V560MCL1 GS	
4	1	D2	LED0603- YELLOW	160-1448-1-ND	Lite-On Inc	LTST-C191KSKT	
5	1	D3	BAS16H	BAS16HT1GOS CT-ND	ON Semiconductor	BAS16HT1G	
6	2	D4, LEDOUT	LED0603- GREEN	160-1888-1-ND	Lite-On Inc	LTST-C191TGKT	
7	11	All Test Points	TP-HOOK	36-5002-ND	Keystone Electronics	5002	
9	4	JCOUT2, JOUTPUTSHORT, JENTOGND, JDVDT	HDR-2	3M9447-ND	3M	961102-6404-AR	
10	4	JGND1, JGND2, JVout, JVCC	BANANA JACK	36-575-8-ND	Keystone Electronics	575-8	
11	2	M1, M2	2N7002KT 1G	2N7002KT1GOS CT-ND	ON Semiconductor	2N7002KT1G	
12	1	Q1	MMBT3904 LT1G	MMBT3904LT1G OSCT-ND	ON Semiconductor	MMBT3904LT1G	
13	1	RIMON	1k 0603	P1.00KHCT-ND	Panasonic	ERJ-3EKF1001V	
14	1	RLIMADJ	50 k Ω	3214X-1-503EC T-ND	Bourns Inc.	3214X-1-503ECT	
15	1	RLIMMIN	4.99k 0603	P4.99KHCT-ND	Panasonic	ERJ-3EKF4991V	
16	1	R1	3M 0603	P3.0MGDKR-ND	Panasonic	ERJ-3GEYJ305V	
17	2	R2,R3	1.1M 0603	P1.10MHCT-ND	Panasonic	ERJ-3EKF1104V	
18	2	R5, RLEDOUT	51k 0603	P51KGCT-ND	Panasonic Electronic Components	ERJ-3GEYJ513V	
19	3	R4, R6, RSASIN	10k 0603	P10.0KHCT-ND	Panasonic	ERJ-3EKF1002V	
20	1	SW1	PB-SW	EG4369-ND	E-Switch	TL1105FF160Q	
21	1	U1	NIS6420M T2	NIS6420MT1/ NIS6420MT2	ON Semiconductor		
22	2	ZDIN, ZDOUT	16 Vz	MM3Z16VT1GO SCT-ND	ON Semiconductor	MM3Z16VT1G	Do not populate
23	1	ZDSASIN	4.3 Volt Zener		ON Semiconductor	MM3Z4V3T1G	Do not populate
24	1	-	CON40	S3314-ND	Sullins	EBC20DRTH	Do not populate

onsemi, **Onsemi**, and other names, marks, and brands are registered and/or common law trademarks of Semiconductor Components Industries, LLC dba "**onsemi**" or its affiliates and/or subsidiaries in the United States and/or other countries. **onsemi** owns the rights to a number of patents, trademarks, copyrights, trade secrets, and other intellectual property. A listing of **onsemi**'s product/patent coverage may be accessed at www.onsemi.com/site/pdf/Patent-Marking.pdf. **onsemi** is an Equal Opportunity/Affirmative Action Employer. This literature is subject to all applicable copyright laws and is not for resale in any manner.

The evaluation board/kit (research and development board/kit) (hereinafter the "board") is not a finished product and is not available for sale to consumers. The board is only intended for research, development, demonstration and evaluation purposes and will only be used in laboratory/development areas by persons with an engineering/technical training and familiar with the risks associated with handling electrical/mechanical components, systems and subsystems. This person assumes full responsibility/liability for proper and safe handling. Any other use, resale or redistribution for any other purpose is strictly prohibited.

THE BOARD IS PROVIDED BY ONSEMI TO YOU "AS IS" AND WITHOUT ANY REPRESENTATIONS OR WARRANTIES WHATSOEVER. WITHOUT LIMITING THE FOREGOING, ONSEMI (AND ITS LICENSORS/SUPPLIERS) HEREBY DISCLAIMS ANY AND ALL REPRESENTATIONS AND WARRANTIES IN RELATION TO THE BOARD, ANY MODIFICATIONS, OR THIS AGREEMENT, WHETHER EXPRESS, IMPLIED, STATUTORY OR OTHERWISE, INCLUDING WITHOUT LIMITATION ANY AND ALL REPRESENTATIONS AND WARRANTIES OF MERCHANTABILITY, FITNESS FOR A PARTICULAR PURPOSE, TITLE, NON-INFRINGEMENT, AND THOSE ARISING FROM A COURSE OF DEALING, TRADE USAGE, TRADE CUSTOM OR TRADE PRACTICE.

onsemi reserves the right to make changes without further notice to any board.

You are responsible for determining whether the board will be suitable for your intended use or application or will achieve your intended results. Prior to using or distributing any systems that have been evaluated, designed or tested using the board, you agree to test and validate your design to confirm the functionality for your application. Any technical, applications or design information or advice, quality characterization, reliability data or other services provided by **onsemi** shall not constitute any representation or warranty by **onsemi**, and no additional obligations or liabilities shall arise from **onsemi** having provided such information or services.

onsemi products including the boards are not designed, intended, or authorized for use in life support systems, or any FDA Class 3 medical devices or medical devices with a similar or equivalent classification in a foreign jurisdiction, or any devices intended for implantation in the human body. You agree to indemnify, defend and hold harmless **onsemi**, its directors, officers, employees, representatives, agents, subsidiaries, affiliates, distributors, and assigns, against any and all liabilities, losses, costs, damages, judgments, and expenses, arising out of any claim, demand, investigation, lawsuit, regulatory action or cause of action arising out of or associated with any unauthorized use, even if such claim alleges that **onsemi** was negligent regarding the design or manufacture of any products and/or the board.

This evaluation board/kit does not fall within the scope of the European Union directives regarding electromagnetic compatibility, restricted substances (RoHS), recycling (WEEE), FCC, CE or UL, and may not meet the technical requirements of these or other related directives.

FCC WARNING – This evaluation board/kit is intended for use for engineering development, demonstration, or evaluation purposes only and is not considered by **onsemi** to be a finished end product fit for general consumer use. It may generate, use, or radiate radio frequency energy and has not been tested for compliance with the limits of computing devices pursuant to part 15 of FCC rules, which are designed to provide reasonable protection against radio frequency interference. Operation of this equipment may cause interference with radio communications, in which case the user shall be responsible, at its expense, to take whatever measures may be required to correct this interference.

onsemi does not convey any license under its patent rights nor the rights of others.

LIMITATIONS OF LIABILITY: **onsemi** shall not be liable for any special, consequential, incidental, indirect or punitive damages, including, but not limited to the costs of requalification, delay, loss of profits or goodwill, arising out of or in connection with the board, even if **onsemi** is advised of the possibility of such damages. In no event shall **onsemi**'s aggregate liability from any obligation arising out of or in connection with the board, under any theory of liability, exceed the purchase price paid for the board, if any.

The board is provided to you subject to the license and other terms per **onsemi**'s standard terms and conditions of sale. For more information and documentation, please visit www.onsemi.com.

PUBLICATION ORDERING INFORMATION

LITERATURE FULFILLMENT:

Email Requests to: orderlit@onsemi.com

onsemi Website: www.onsemi.com

TECHNICAL SUPPORT

North American Technical Support:

Voice Mail: 1 800-282-9855 Toll Free USA/Canada

Phone: 011 421 33 790 2910

Europe, Middle East and Africa Technical Support:

Phone: 00421 33 790 2910

For additional information, please contact your local Sales Representative