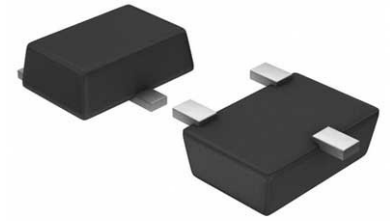


RF Switch SPDT 0MHz to 3GHz 14dB Automotive 6-Pin SOT-23 T/R



Images are for reference only

[Inquiry](#)

Manufacturer: [Analog Devices, Inc](#)

Package/Case: SOT23-6

Product Type: Switches

Lifecycle: Active

General Description

The HMC595A & HMC595AE are low-cost SPDT switches in 6-lead SOT26 packages for use in transmit/receive applications which require very low distortion at high incident power levels. The device can control signals from DC to 3 GHz and is especially suited for Cellular/3G infrastructure, WiMAX and WiBro applications with only 0.3 dB typical insertion loss. The design provides a 3 watt power handling and +63 dBm third order intercept at +8 Volt bias. RF1 and RF2 are reflective shorts when “Off”. Control inputs A & B are compatible with CMOS and some TTL logic families. These products are form, fit and function replacements for HMC595 & HMC595E while offering superior electrical performance.

Applications The HMC595A / 595AE is ideal for:

- Cellular/3G Infrastructure
- Private Mobile Radio Handsets
- WLAN, WiMAX & WiBro
- Automotive Telematics
- Test Equipment

Key Features

- Low Insertion Loss: 0.3 dB
- High Input IP3: +63 dBm
- Isolation: 30 dB
- Positive Control: 0/+3V to 0/+10V
- Ultra Small Package: SOT26

Application

- Cellular/3G Infrastructure
- WLAN, WiMAX & WiBro
- Automotive Telematics
- Test Equipment

Recommended For You

HMC624ALP4E

Analog Devices, Inc

QFN24

HMC952ALP5GE

Analog Devices, Inc

QFN

HMC361S8GE

Analog Devices, Inc

SOP-8

HMC253AQS24E

Analog Devices, Inc

QFN

HMC346MS8G

Analog Devices, Inc

MSOP8

HMC1119LP4ME

Analog Devices, Inc

QFN

HMC659LC5

Analog Devices, Inc

QFN

HMC909LP4E

Analog Devices, Inc

QFN

HMC564LC4

Analog Devices, Inc

QFN

HMC1021LP4E

Analog Devices, Inc

QFN

HMC241AQS16E

Analog Devices, Inc

SSOP16

HMC424LP3E

Analog Devices, Inc

QFN

HMC662LP3E

Analog Devices, Inc

QFN

HMC8038LP4CE

Analog Devices, Inc

QFN16

HMC363S8G

Analog Devices, Inc

SOP8