
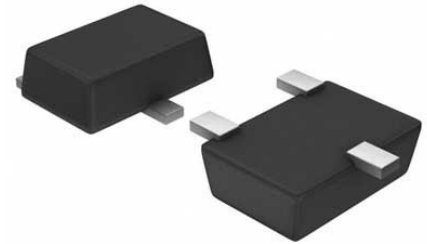


## Silicon Serial Number 3-Pin SOT-23 T/R

<b>Manufacturer:</b>	<a href="#">Maxim Integrated</a>
<b>Package/Case:</b>	SOT23-3
<b>Product Type:</b>	Memory
<b>RoHS:</b>	RoHS Compliant/Lead free 
<b>Lifecycle:</b>	Active



Images are for reference only

[Inquiry](#)

## General Description

The DS2411 silicon serial number is a low-cost, electronic registration number with external power supply. It provides an absolutely unique identity that can be determined with a minimal electronic interface (typically, a single port pin of a microcontroller). The DS2411's registration number is a factory-lasered, 64-bit ROM that includes a unique 48-bit serial number, an 8-bit CRC, and an 8-bit family code (01h). Data is transferred serially through the Maxim 1-Wire protocol. The external power supply is required, extending the operating voltage range of the device below typical 1-Wire devices.

## Key Features

- Unique, Factory-Lasered and Tested 64-Bit Registration Number (8-Bit Family Code Plus 48-Bit Serial Number Plus 8-Bit CRC Tester); Guaranteed No Two Parts Alike
- Standby Current <1μA
- Built-In Multidrop Controller Enables Multiple DS2411s to Reside on a Common 1-Wire Network
- Multidrop Compatible with Other 1-Wire Products
- 8-Bit Family Code Identifies Device as DS2411 to the 1-Wire Master
- Directly Connects to a Single-Port Pin of a Microprocessor and Communicates at up to 15.4kbps
- Overdrive Mode Boosts Communication Speed to 125kbps
- Operating Range: 1.5V to 5.25V, -40°C to +85°C

## Application

- Accessory/Peripheral Identification
- Equipment Registration
- Module Identification
- Network-Node Identification
- PCB Identification
- Reference Design License Management

## Recommended For You

### DS1990A-F5+

Maxim Integrated

BUTTON

### DS1990A-F5

Maxim Integrated

BUTTON

### DS2401P+T&R

Maxim Integrated

TSOC-6

**DS28C36Q+T**

Maxim Integrated

TDFN-6

**DS1990R-F3#**

Maxim Integrated

SMDSMT

**DS2411P+**

Maxim Integrated

TSOC6

**DS2401P+**

Maxim Integrated

TSOC-6

**DS2411P**

Maxim Integrated

TSOC6

**DS28E25+**

Maxim Integrated

SOJ6

**DS2411R+U**

Maxim Integrated

SOT-23

**DS1990A-F3**

Maxim Integrated

CAN

**DS28E36Q+T**

Maxim Integrated

DFN-6

**DS28E36BQ+T**

Maxim Integrated

TDFN-6

**DS28EL22Q+U**

Maxim Integrated

SMDSMT

**DS2477Q+T**

Maxim Integrated

TDFN