

## Serial Communication Controller 44-Pin PLCC

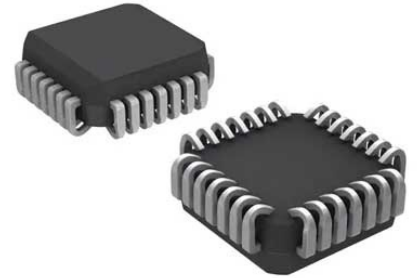
**Manufacturer:** [Zilog, Inc](#)

**Package/Case:** PLCC

**Product Type:** Drivers

**RoHS:** RoHS Compliant/Lead free 

**Lifecycle:** Active



Images are for reference only

[Inquiry](#)

## General Description

Z85C30 Serial Communications Controller (SCC) is a pin- and software-compatible CMOS member of the SCC family introduced byin 1981. It is a dual-channel, multi-protocol data communications peripheral that easily interfaces to a CPU's non-multiplexed address/data buses. The advanced CMOS process offers lower power consumption, higher performance and superior noise immunity.

## Key Features

Improve functionality to ease sending back-to-back frames

Automatic SDLC opening flag transmission

Automatic Tx underrun/EOM latch reset in SDLC mode

Automatic RTS deactivation

TxD Pin forced high in SDLC NRZI mode after closing flag

Complete CRC reception

Improved response to abort sequence in status FIFO

Automatic Tx CRC generator preset/reset

Extended read for write registers

Write data set-up timing improvement

Programmable DTR/REQ timing

Write data to falling edge of WR setup time requirement is now eliminated

Reduced INT timing

Extended read function to read back the written value to the Write registers

Latching RRO during read

## Recommended For You

---

### Z85C3010PEC

Zilog, Inc

DIP-40

### Z85C3010VSC

Zilog, Inc

PLCC44

### Z85C3010PSC

Zilog, Inc

DIP

### Z85C3008PSC

Zilog, Inc

DIP

### Z85C3016VSC

Zilog, Inc

PLCC44

### Z85C3010VEG

Zilog, Inc

PLCC

### Z80C3010PSC

Zilog, Inc

PDIP

### Z85C3008PEG

Zilog, Inc

DIP40

### Z84C4206PEG

Zilog, Inc

DIP-40

### Z85C3016VSG

Zilog, Inc

PLCC

### Z80C3008PSC

Zilog, Inc

DIP

### Z85C3008PEC

Zilog, Inc

DIP

**Z85C3008VEG**

Zilog, Inc

PLCC

**Z84C4206PEC**

Zilog, Inc

DIP-40

**Z85C3010VSG**

Zilog, Inc

PLCC