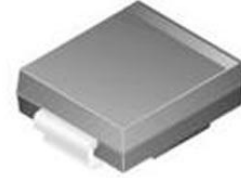


Diode TVS Single Uni-Dir 5V 1.5KW 2-Pin SMC T/R



Images are for reference only

[Inquiry](#)

Manufacturer: [Littelfuse Inc](#)

Package/Case: SMC

Product Type: Thyristors

Lifecycle: Active

General Description

The SMCJ5.0A diode is a surface-mount device that provides transient voltage suppression for electronic circuits. It is commonly used to protect sensitive components and circuits from voltage surges that can occur due to electrostatic discharge (ESD), lightning strikes, or other transient events. 1500 Watt Peak Pulse Power VOLTAGE-5.0 TO 440 Volts

Key Features

Halogen-Free and RoHS compliant

For surface mount applications in order to optimize board space

Low profile package

Built-in strain relief

Glass passivated junction

Low inductance

Excellent clamping capability

Repetition Rate (duty cycle): 0.05%

Fast response time: typically less than 1.0ps from 0 Volts to V(BR) min.

Typical IR less than 1mA above 10V

High temperature soldering: 250 degrees C/10 seconds at terminals

Plastic package has Underwriters Laboratory Flammability 94V-O

Application

Power Supply Protection: It can be used in power supplies to protect sensitive components, such as integrated circuits (ICs), from voltage surges.

Communication Systems: The diode is utilized in communication systems, such as Ethernet interfaces, to safeguard against voltage spikes that can damage sensitive circuitry.

Consumer Electronics: It is employed in consumer electronic devices, such as TVs, computers, and smartphones, to protect against ESD events and other transient voltage disturbances.

Industrial Equipment: The diode finds applications in industrial equipment and machinery to protect control systems and sensitive electronic components from voltage transients.

Automotive Electronics: It is used in automotive electronics to protect against voltage surges caused by load dump, electrostatic discharge, or other electrical disturbances.

Recommended For You

SMAJ12A

Littelfuse Inc

SMA

SMAJ58CA

Littelfuse Inc

SMA

SMBJ22A

Littelfuse Inc

SMB

SMAJ30A

Littelfuse Inc

SMA

SMBJ30A

Littelfuse Inc

SMB

SMAJ24CA

Littelfuse Inc

DO-214AC

SMBJ18A

Littelfuse Inc

SMB

SMBJ24A

Littelfuse Inc

SMB

SMBJ36CA

Littelfuse Inc

SMB

SMAJ12CA

Littelfuse Inc

SMA

SMCJ30CA

Littelfuse Inc

SMC

SMAJ28CA

Littelfuse Inc

SMA

SMBJ26CA

Littelfuse Inc

SMB

SMBJ17A

Littelfuse Inc

SMB

SMBJ20A

Littelfuse Inc

SMB