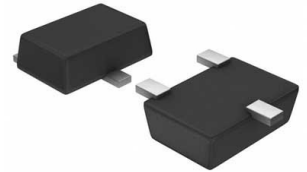


**Conv DC-DC 4V to 60V Step Down Single-Out 0.8V to 55V 0.6A
Automotive 6-Pin TSOT-23 T/R**



Images are for reference only

Manufacturer: [Texas Instruments, Inc](#)

Package/Case: SOT23-6

Product Type: Power Management ICs

RoHS: RoHS Compliant/Lead free 

Lifecycle: Active

[Inquiry](#)

General Description

The LMR16006 is a PWM DC/DC buck (step-down) regulator. With a wide input range of 4 V to 60 V, it is suitable for a wide range of application from industrial to automotive for power conditioning from an unregulated source. The regulator's standby current is 28 μ A in ECO mode, which is suitable for battery operating systems. An ultra low 1 μ A shutdown current can further prolong battery life. Operating frequency is fixed at 0.7 MHz (X version) and 2.1 MHz (Y version) allowing the use of small external components while still being able to have low output ripple voltage. Soft-start and compensation circuits are implemented internally, which allows the device to be used with minimized external components. The LMR16006 is optimized for up to 600 mA load currents. It has a 0.765 V typical feedback voltage. The device has built-in protection features such as pulse by pulse current limit, thermal sensing and shutdown due to excessive power dissipation. The LMR16006 is available in a low profile SOT-6L package.

Key Features

Ultra Low 28 μ A Standby Current in ECO Mode

Input Voltage Range 4 V to 60 V

1 μ A Shutdown Current

High Duty Cycle Operation Supported

Output Current up to 600 mA

0.7 MHz and 2.1 MHz Switching Frequency

Internal Compensation

High Voltage Enable Input

Internal Soft Start

Over Current Protection

Over Temperature Protection

Small Overall Solution Size (SOT-6L Package)

Description

The LMR16006 is a PWM DC/DC buck (step-down) regulator. With a wide input range of 4 V to 60 V, it is suitable for a wide range of application from industrial to automotive for power conditioning from an unregulated source. The regulator's standby current is 28 μ A in ECO mode, which is suitable for battery operating systems. An ultra low 1 μ A shutdown current can further prolong battery life. Operating frequency is fixed at 0.7 MHz (X version) and 2.1 MHz (Y version) allowing the use of small external components while still being able to have low output ripple voltage. Soft-start and compensation circuits are implemented internally, which allows the device to be used with minimized external components. The LMR16006 is optimized for up to 600 mA load currents. It has a 0.765 V typical feedback voltage. The device has built-in protection features such as pulse by pulse current limit, thermal sensing and shutdown due to excessive power dissipation. The LMR16006 is available in a low profile SOT-6L package.

Recommended For You

LM2637M

Texas Instruments, Inc

SOP24

LM5116MH

Texas Instruments, Inc

TSSOP20

LM234Z-3

Texas Instruments, Inc

TO-92

LM27761DSGR

Texas Instruments, Inc

WSON8

LM74700QDBVRQ1

Texas Instruments, Inc

SOT23-6

LM2991S

Texas Instruments, Inc

TO-263

LM74800QDRRRQ1

Texas Instruments, Inc

WSON-12

LMR14030SDDAR

Texas Instruments, Inc

SOP8

LM2940CT-12

Texas Instruments, Inc

TO-220

LM536035QPWPTQ1

Texas Instruments, Inc

HTSSOP-16

LM5575MH

Texas Instruments, Inc

TSSOP16

LM536013QDSXTQ1

Texas Instruments, Inc

WSON-10

LM5160QPWPRQ1

Texas Instruments, Inc

HTSSOP14

LM5576MH

Texas Instruments, Inc

TSSOP20

LMQ61460AFSQRJRRQ1

Texas Instruments, Inc

VQFN-14