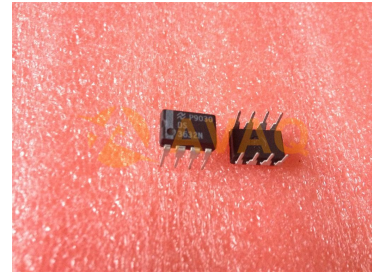


## CMOS DUAL PERIPHERAL DRIVERS

<b>Manufacturer:</b>	<a href="#">Texas Instruments, Inc</a>
<b>Package/Case:</b>	DIP8
<b>Product Type:</b>	Drivers
<b>Lifecycle:</b>	Obsolete



Images are for reference only

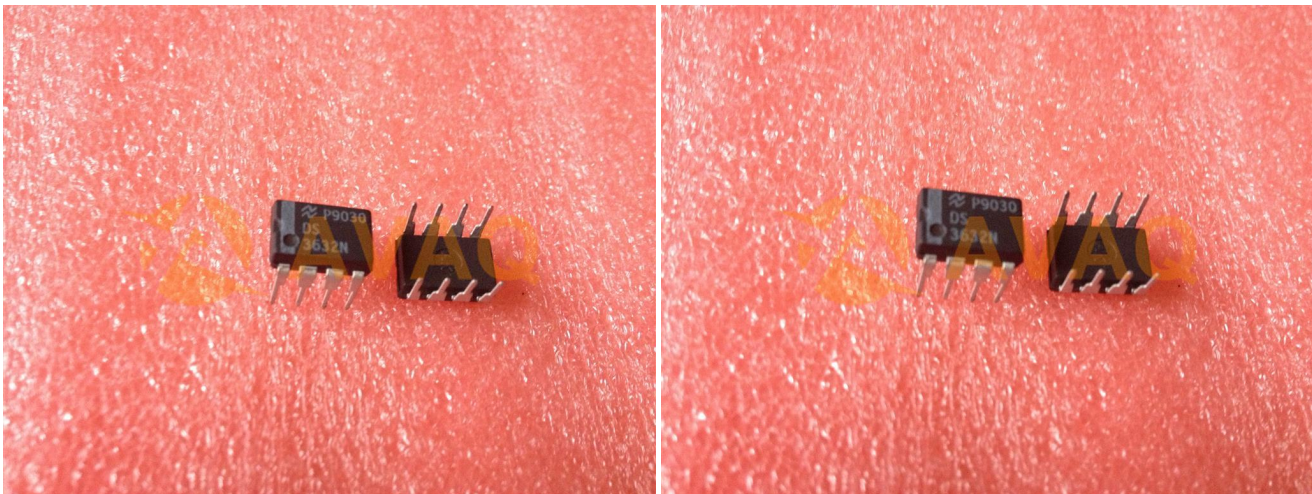
[Inquiry](#)

### General Description

Avaq Semiconductor offers the highly versatile and reliable DS3632N driver, produced by Texas Instruments, Inc. With its multifunctional and high-performance capabilities, this component is an excellent choice for a wide range of electronic projects.

To ensure that you have all the necessary information to make the most of this component, Avaq provides a free datasheet PDF, as well as circuit diagrams, pin layouts, pin details, pin voltage ratings, and equivalent components for the DS3632N.

Avaq also offers free samples. Simply fill out and submit the sample request form to receive your free samples for testing. If you have any questions, please feel free to contact us at ar



### Recommended For You

#### DS3631N

Texas Instruments, Inc  
DIP8

#### DS3633N

Texas Instruments, Inc  
DIP8

#### DS3634N

Texas Instruments, Inc  
DIP8

#### DS3669N

Texas Instruments, Inc  
DIP

#### DS1632J-8/883

Texas Instruments, Inc  
CDIP8

#### DS1632H

Texas Instruments, Inc  
CAN8

**DS100BR410SQ**

Texas Instruments, Inc  
QFN

**DS1614J-8**

Texas Instruments, Inc  
CDIP-8

**DS100BR410SQX**

Texas Instruments, Inc  
WQFN-48

**DS3656N**

Texas Instruments, Inc  
DIP16

**DS100BR410SQE**

Texas Instruments, Inc  
QFN

**DS1631H**

Texas Instruments, Inc  
CAN-8

**DS1633H**

Texas Instruments, Inc  
CAN8

**DS1634J-8**

Texas Instruments, Inc  
CDIP8

**DS1634H**

Texas Instruments, Inc  
CAN8