
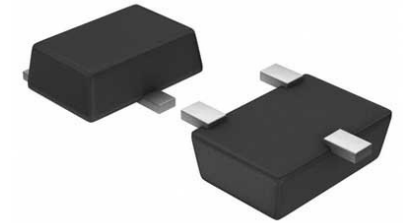


## Comparator Single R-R I/P $\pm 8V/16V$ Automotive 5-Pin SOT-23

T/R

<b>Manufacturer:</b>	<a href="#">Texas Instruments, Inc</a>
<b>Package/Case:</b>	SOT23-5
<b>Product Type:</b>	Linear Displacement Sensors
<b>RoHS:</b>	RoHS Compliant/Lead free 
<b>Lifecycle:</b>	Active



Images are for reference only

[Inquiry](#)

### General Description

The TLV370x is Texas Instruments' first family of nanopower comparators with only 560 nA per channel supply current, which make this device ideal for low power applications.

The TLV370x has a minimum operating supply voltage of 2.7 V over the extended temperature range

( $T_A = -40^\circ\text{C}$  to  $125^\circ\text{C}$ ), while having an input common-mode range of  $-0.1$  to  $V_{CC} + 5$  V. The low supply current makes it an ideal choice for low power applications where quiescent current is the primary concern. Reverse battery protection guards the amplifier from an over-current condition due to improper battery installation. For harsh environments, the inputs can be taken 5 V above the positive supply rail without damage to the device.

Devices are available in SOIC with the singles in the small SOT-23 package. Other package options may be made available upon request.

## Key Features

Qualified for Automotive Applications

ESD Protection Exceeds 2000 V Per MIL-STD-883, Method 3015; Exceeds 200 V Using Machine Model (C = 200 pF, R = 0)

Low Supply Current ...560 nA/Per Channel

Input Common-Mode Range Exceeds the Rails ...-0.1 V to  $V_{CC} + 5 V$

Supply Voltage Range ...2.7 V to 16 V

Reverse Battery Protection Up to 18 V

Push-Pull CMOS Output Stage

Specified Temperature Range  
-40°C to 125°C - Automotive Grade

Ultrasmall Packaging  
5-Pin SOT-23 (TLV3701)

Universal Op-Amp EVM (Reference SLOU060 for more information)

### APPLICATIONS

Low Power Automotive Systems

Security Detection Systems

## Recommended For You

---

### TLC27M2CP

Texas Instruments, Inc

DIP8

### TLV3501AIDR

Texas Instruments, Inc

SOP8

### TL071ACP

Texas Instruments, Inc

DIP-8

### TL062CDR

Texas Instruments, Inc

SOP8

### TL2142IP

Texas Instruments, Inc

DIP8

### TLC272AID

Texas Instruments, Inc

SOP-8

### TLV3502AQDCNRQ1

Texas Instruments, Inc

SOT23-8

### TL084CD

Texas Instruments, Inc

SOP14

### TLV2711DBVR

Texas Instruments, Inc

SOT23-5

### TLC074CD

Texas Instruments, Inc

SOP14

### TLC2272ACD

Texas Instruments, Inc

SOP-8

### TLC2272AIDR

Texas Instruments, Inc

SOP8

**TLV2462ID**

Texas Instruments, Inc

SOP-8

**TLV2471QDBVRQ1**

Texas Instruments, Inc

SOT23-5

**TLV2381IDBVR**

Texas Instruments, Inc

SOT23-5