

V-Ref Adjustable 2.495V to 36V 100mA Automotive 3-Pin SOT-23 T/R

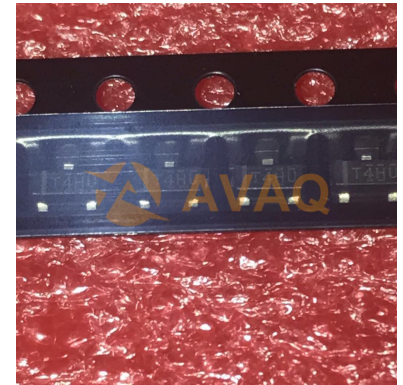
Manufacturer: [Texas Instruments, Inc](#)

Package/Case: SOT23-3

Product Type: Power Management ICs

RoHS: RoHS Compliant/Lead free 

Lifecycle: Active



Images are for reference only

[Inquiry](#)

General Description

The TL431 and TL432 are adjustable shunt voltage references with guaranteed temperature stability over the entire operating temperature range. The device temperature range is extended for the automotive version from -40 °C up to +125 °C. The output voltage can be set to any value between 2.5 and 36 V with two external resistors. The TL431 and TL432 operate with a wide current range from 1 to 100 mA with a typical dynamic impedance of 0.22 Ω .

Key Features

AEC-Q100 qualified

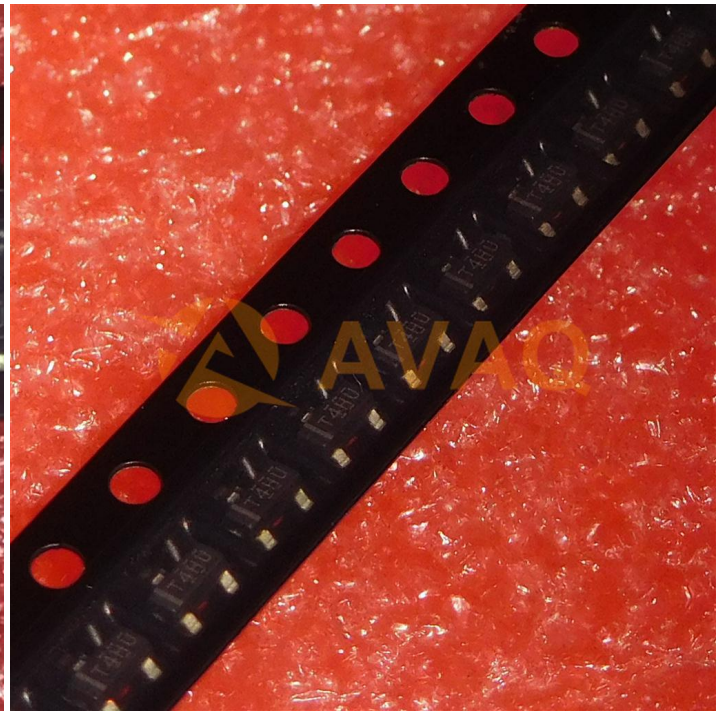
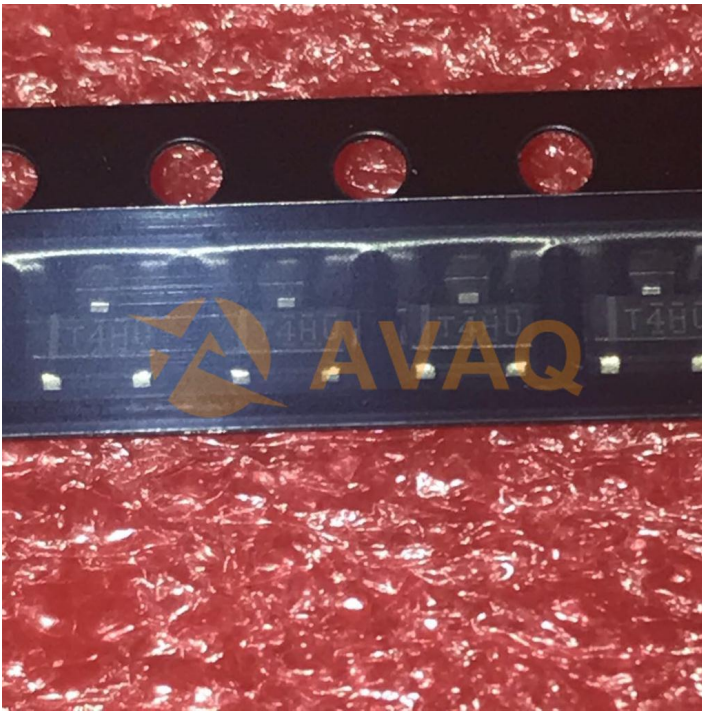
Adjustable output voltage: 2.5 to 36 V

Sink current capability: 1 to 100 mA

Typical output impedance: 0.22 Ω

1% and 2% voltage precision

Automotive temp. range - 40 °C to +125 °C



Recommended For You

TL2843P

Texas Instruments, Inc

DIP8

TL431CP

Texas Instruments, Inc

DIP8

TL7705ACDR

Texas Instruments, Inc

SOP8

TL3843P

Texas Instruments, Inc

DIP8

TL497ACN

Texas Instruments, Inc

DIP14

TL3845P

Texas Instruments, Inc

DIP8

TL494CD

Texas Instruments, Inc

SOP-16

TL431HDBVR

Texas Instruments, Inc

SOT23-5

TL494CN

Texas Instruments, Inc

DIP

TL431CDBVR

Texas Instruments, Inc

SOT23-5

TL7705ACP

Texas Instruments, Inc

DIP8

TL3842P

Texas Instruments, Inc

DIP8

TLV73325PDBVT

Texas Instruments, Inc

SOT23-5

TLV73333PDBVR

Texas Instruments, Inc

SOT23-5

TL431BIDBZT

Texas Instruments, Inc

SOT23-3