
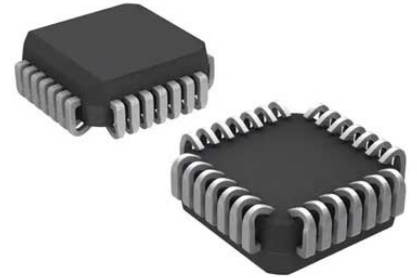


EPROM OTP 4M-bit 512K x 8 70ns 32-Pin PLCC Tube

Manufacturer:	Microchip Technology, Inc
Package/Case:	PLCC
Product Type:	Memory
RoHS:	RoHS Compliant/Lead free 
Lifecycle:	Active



Images are for reference only

[Inquiry](#)

General Description

The Microchip AT27C040 is a low-power, high-performance, 4-megabit One Time Programmable EPROM organized as 512-Kbit x 8. Requiring a single 5V power supply, in normal read mode operation typical power consumption is only 8mA in active mode and less than 10 μ A in standby mode. Any byte can be accessed in less than 70 ns, eliminating the need for speed reducing WAIT states on high-performance microprocessor systems.

Key Features

Low-power CMOS operation

High-reliability CMOS technology

2000V ESD protection

200mA Latch up immunity

Rapid programming algorithm - 100 μ s/byte

CMOS and TTL-compatible inputs and outputs

Recommended For You

AT93C46E-PU

Microchip Technology, Inc

DIP8

AT93C46D-PU

Microchip Technology, Inc

DIP8

AT24C64D-SSHM-T

Microchip Technology, Inc

SOP8

AT24C128C-MAHM-T

Microchip Technology, Inc
UDFN-8

AT93C66B-XHM-T

Microchip Technology, Inc
TSSOP8

AT25256B-SSHL-T

Microchip Technology, Inc
SOP8

AT24C08C-SSHMT

Microchip Technology, Inc
SOP8

AT24C04C-PUM

Microchip Technology, Inc
DIP8

AT24C256C-SSHL-T

Microchip Technology, Inc
SOP8

AT24C02C-XHM-T

Microchip Technology, Inc
TSSOP8

AT24C02C-XHM-B

Microchip Technology, Inc
TSSOP8

AT24C32D-SSHMT

Microchip Technology, Inc
SOP8

AT24C02C-SSHMT

Microchip Technology, Inc
SOP8

AT24C16C-SSHMT-B

Microchip Technology, Inc
SOP-8

AT93C56B-SSHMT

Microchip Technology, Inc
SOP8