
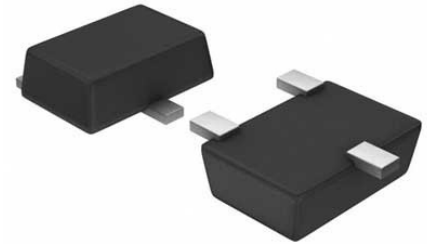


DAC 1-CH Resistor-String 8-bit 6-Pin SOT-23 T/R

Manufacturer:	Texas Instruments, Inc
Package/Case:	SOT23-6
Product Type:	Data Conversion ICs
RoHS:	RoHS Compliant/Lead free 
Lifecycle:	Active



Images are for reference only

[Inquiry](#)

General Description

The CDCE937-Q1 and CDCEL937-Q1 devices are modular, phase-locked loop (PLL) based programmable clock synthesizers. These devices provide flexible and programmable options, such as output clocks, input signals, and control pins, so that the user can configure the CDCE937-Q1 for their own specifications.

The CDCE937-Q1 generates up to seven output clocks from a single input frequency to enable both board space and cost savings. Additionally, with multiple outputs, the clock generator can replace multiple crystals with one clock generator. This makes the device well-suited for head unit and telematics applications in infotainment and camera systems in ADAS as these platforms are evolving into smaller and more cost effective systems.

Furthermore, each output can be programmed in-system for any clock frequency up to 230 MHz through the integrated, configurable PLL. The PLL also supports spread-spectrum clocking (SSC) with programmable down and center spread. This provides better electromagnetic interference (EMI) performance to enable customers to pass industry standards such as CISPR-25.

Customization of frequency programming and SSC are accessed using three user-defined control pins. This eliminates the additional interface requirement to control the clock. Specific power-up and power-down sequences can also be defined to the user's needs.

Key Features

- Power-on reset to zero
- Specified monotonic by design
- On-chip output buffer amplifier
- Rail-to-rail operation
- Double-buffered input register
- Green product and no Sb/Br

Recommended For You

DAC6578SPW

Texas Instruments, Inc
TSSOP-16

DAC7802KU

Texas Instruments, Inc
SOP24

DAC122S085C1MM/NOPB

Texas Instruments, Inc
MSOP10

DAC0800LCM

Texas Instruments, Inc
SOP16

DAC1220E

Texas Instruments, Inc
SSOP16

DAC7625U

Texas Instruments, Inc
SOP28

DAC38J84IAAV

Texas Instruments, Inc
BGA

DAC8043U

Texas Instruments, Inc
SOP8

DAC7734E

Texas Instruments, Inc
SSOP48

DAC712UB

Texas Instruments, Inc
SOP28

DAC7634E

Texas Instruments, Inc
SSOP48

DAC712UK

Texas Instruments, Inc
SOP28

DAC7614UB

Texas Instruments, Inc
SOP16

DAC108S085C1MI/NOPB

Texas Instruments, Inc
TSSOP-16

DAC8164IAPW

Texas Instruments, Inc
TSSOP