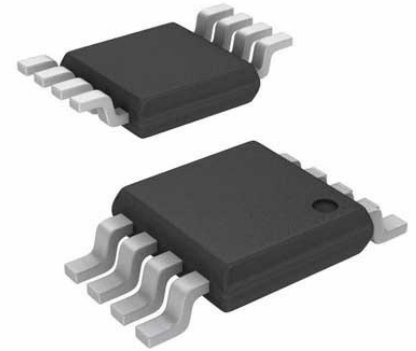


LED Driver 7 Segment Automotive 8-Pin HVSSOP EP T/R



Images are for reference only

[Inquiry](#)

Manufacturer: [Texas Instruments, Inc](#)

Package/Case: MSOP8

Product Type: Optoelectronics

RoHS: RoHS Compliant/Lead free 

Lifecycle: Active

General Description

The LM3407 device is a constant current output floating buck switching converter designed to provide constant current to high-power LEDs. The device is ideal for automotive, industrial, and general lighting applications. The LM3407 has an integrated power N-channel MOSFET that makes the application solution compact and simple to implement. An external 1% thick-film resistor allows the converter output voltage to adjust as needed to deliver constant current within 10% accuracy to a serially connected LED string of varying number and type. Converter switching frequency is adjustable from 300 kHz to 1 MHz. The LM3407 features a dimming input to enable LED brightness control by Pulse Width Modulation (PWM). Additionally, a separate enable pin allows for low-power shutdown. An exposed pad MSOP-8 package provides excellent heat dissipation and thermal performance. Input UVLO and output open-circuit protection ensure a robust LED driver solution.

Key Features

Input Operating Range 4.5 V to 30 V

Output Voltage Range: $0.1 V_{IN}$ to $0.9 V_{IN}$

Accurate Constant Current Output

Independent Device Enable (CMOS Compatible) and PWM Dimming Control

Converter Switching Frequency Adjustable From 300 kHz to 1 MHz

No External Control Loop Compensation Required

Supports Ceramic and Low ESR Output Capacitors

Input Undervoltage Lockout (UVLO)

Thermal Shutdown Protection

MSOP-8 PowerPAD Package

Recommended For You

LM2438T

Texas Instruments, Inc
TO-220-9

LMB409HVMY/NOPB

Texas Instruments, Inc
MSOP10

LMB429Q1MHX/NOPB

Texas Instruments, Inc
HTSSOP14

LMB409MY/NOPB

Texas Instruments, Inc
MSOP10

LMB509SD/NOPB

Texas Instruments, Inc
QFN

LMB406HVMHX/NOPB

Texas Instruments, Inc
TSSOP14

LMB409MYX/NOPB

Texas Instruments, Inc
MSOP10

LMB405AXMY/NOPB

Texas Instruments, Inc
HVSSOP8

LM2406T

Texas Instruments, Inc
ZIP11

LM2415T

Texas Instruments, Inc
ZIP11

LM2469TA

Texas Instruments, Inc
TO-220-9

LM2468TA

Texas Instruments, Inc
TO-220

LM2467TA

Texas Instruments, Inc
TO-220-9

LM2407T

Texas Instruments, Inc
ZIP11

LMB410XMF/NOPB

Texas Instruments, Inc
SOT23-5