
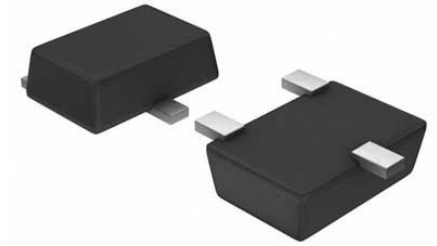


Inverter 1-Element CMOS 5-Pin SSOP T/R

Manufacturer:	ROHM Semiconductor
Package/Case:	SOT23-5
Product Type:	Logic ICs
RoHS:	RoHS Compliant/Lead free 
Lifecycle:	Active



Images are for reference only

[Inquiry](#)

General Description

Logic gate series of ROHM that is compatible with 4S, 4000B series corresponds to high power supply voltage and has wide lineup with all kinds of function. It is able to be used with various applications.

Key Features

Low power consumption.

Wide operating supply voltage (3 to 16 (18)V).

High input impedance.

High fan out.

L-TTL2 input and LS-TTL1 input can be driven directly.

Pin compatible with 4S, 4000B series.

Function compatible with 4S, 4000B series.

Wide lineup of package.

Recommended For You

BU4S71G2-TR

ROHM Semiconductor

SOT23-5

BU4S81G2-TR

ROHM Semiconductor

SOT23-5

BU4S11G2-TR

ROHM Semiconductor

SOT23-5

BU4S584G2-TR

ROHM Semiconductor
SOT23-5

BU2090FS-E2

ROHM Semiconductor
SSOP16

BU1851G UW-E2

ROHM Semiconductor
BGA

BU1852GXW-E2

ROHM Semiconductor
UBGA035W030

BU2092F-E2

ROHM Semiconductor
SOP

BU2090F-E2

ROHM Semiconductor
SOP

BU1852G UW-E2

ROHM Semiconductor
BGA

BU2092FV-E2

ROHM Semiconductor
TSSOP20

BU2098F-E2

ROHM Semiconductor
SOP

BD7LS08G-CTL

ROHM Semiconductor
5-SSOP

BD7LS125G-CTL

ROHM Semiconductor
AN

BD7LS04G-CTL

ROHM Semiconductor
BGA