
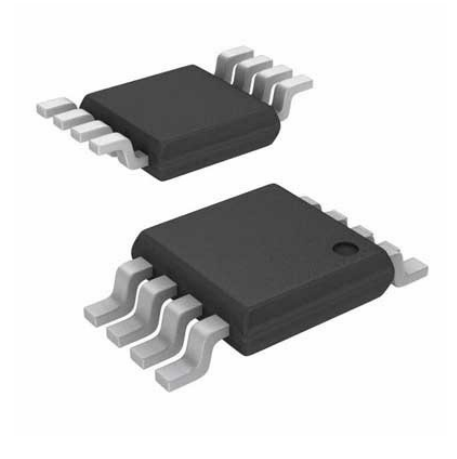


Comparator Dual R-R I/O 5.5V 8-Pin MSOP T/R

Manufacturer:	STMicroelectronics, Inc
Package/Case:	MSOP-8
Product Type:	Linear Displacement Sensors
RoHS:	RoHS Compliant/Lead free 
Lifecycle:	Active



Images are for reference only

[Inquiry](#)

General Description

The TS882 is a dual and the TS884 device a quad comparator featuring ultra-low supply current (220 nA typical per operator with output high, VCC = 1.2 V, no load) with rail-to-rail input and output capability. The performance of these comparators allows them to be used in a wide range of portable applications. The TS882 and TS884 devices minimize battery supply leakage and therefore enhance battery lifetime.

Key Features

- Push-pull outputs
- 8kV HBM/300V MM ESD tolerance
- 220nA Ultra-low current consumption

Recommended For You

TS3021ILT

STMicroelectronics, Inc
SOT23-5

TS391ILT

STMicroelectronics, Inc
SOT23-5

TS912AIDT

STMicroelectronics, Inc
SOP-8

TSZI21ILT

STMicroelectronics, Inc
SOT23-5

TS3702CDT

STMicroelectronics, Inc
SOP-8

TSX3702IQ2T

STMicroelectronics, Inc
DFN-8

TS881HLT

STMicroelectronics, Inc
SOT23-5

TSV992IYDT

STMicroelectronics, Inc
SOP8

TS3022IYST

STMicroelectronics, Inc
MiniSO-8

TS507CLT

STMicroelectronics, Inc
SOT23-5

TS339IPT

STMicroelectronics, Inc
TSSOP14

TSC103IPT

STMicroelectronics, Inc
TSSOP-8

TS3021HYLT

STMicroelectronics, Inc
SOT23-5

TSC2010HYDT

STMicroelectronics, Inc
SOIC-8

TS3021HIYLT

STMicroelectronics, Inc
SOT23-5