
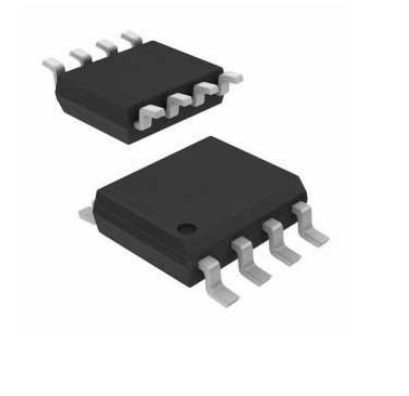


## Driver 1.5A 2-OUT Low Side Inv 8-Pin SOIC N Tube

<b>Manufacturer:</b>	<a href="#">Microchip Technology, Inc</a>
<b>Package/Case:</b>	SOP-8
<b>Product Type:</b>	Drivers
<b>RoHS:</b>	RoHS Compliant/Lead free 
<b>Lifecycle:</b>	Active



Images are for reference only

[Inquiry](#)

## General Description

The TC426/TC427/TC428 are dual CMOS high-speed drivers. A TTL/CMOS input voltage level is translated into a rail-to-rail output voltage level swing. The CMOS output is within 25mV of ground or positive supply. The low impedance, high-current driver outputs swing a 1000pF load 18V in 30nsec. The unique current and voltage drive qualities make the TC426/TC427/TC428 ideal power MOSFET drivers, line drivers, and DC-to-DC converter building blocks. Input logic signals may equal the power supply voltage. Input current is a low 1A, making direct interface to CMOS/bipolar switch-mode power supply control ICs possible, as well as open-collector analog comparators. Quiescent power supply current is 8mA maximum. The TC426 requires 1/5 the current of the pin-compatible bipolar DS0026 device. This is important in DC-to-DC converter applications with power efficiency constraints and high-frequency switch-mode power supply applications. Quiescent current is typically 6mA when driving a 1000pF load 18V at 100kHz. The inverting TC426 driver is pin-compatible with the bipolar DS0026 and MMH0026 devices. The TC427 is noninverting; the TC428 contains an inverting and non-inverting driver. Other pin compatible driver families are the TC1426/27/28, TC4426/27/28, and TC4426A/27A/28A.

For product comparison, please consider:TC4426A

## Key Features

High-Speed Switching (CL = 1000pF): 30nsec

High Peak Output Current: 1.5A

High Output Voltage Swing: VDD – 25mV GND +25mV

Low Input Current (Logic "0" or "1"): 1mA

TTL/CMOS Input Compatible

Available in Inverting and Noninverting Configurations

Wide Operating Supply Voltage: 4.5V to 18V

Current Consumption

Inputs Low: 0.4mA

Inputs High: 8mA

Single Supply Operation

Low Output Impedance: 6Ω

Pinout Equivalent of DS0026 and MMH0026

Latch-Up Resistant: Withstands > 500mA Reverse Current

ESD Protected: 2kV

## Recommended For You

---

### TC7660COA

Microchip Technology, Inc

SOP8

### TC54VC3002ECB713

Microchip Technology, Inc

SOT-23

### TC4428ACOA

Microchip Technology, Inc

SOP8

### TC429CPA

Microchip Technology, Inc

DIP8

### TC4420EPA

Microchip Technology, Inc

DIP8

### TC1232CPA

Microchip Technology, Inc

DIP8

### TC1232COA

Microchip Technology, Inc

SOP-8

### TC4427AEP

Microchip Technology, Inc

DIP8

### TC4421CAT

Microchip Technology, Inc

TO220-5

### TC4420CPA

Microchip Technology, Inc

DIP8

### TC4422EPA

Microchip Technology, Inc

DIP8

### TC1232EOA

Microchip Technology, Inc

SOP-8

**TC1240AECHR**

Microchip Technology, Inc

SOT23-6

**TC4421CPA**

Microchip Technology, Inc

DIP8

**TC4420COA**

Microchip Technology, Inc

SOP-8