
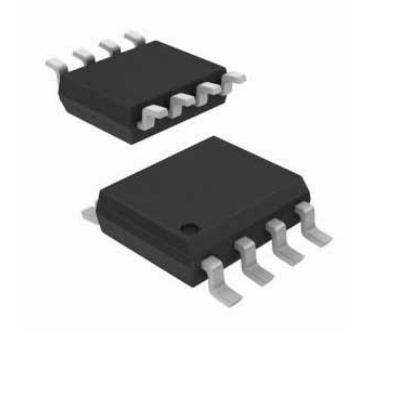


LIN Transceiver 20kBd Automotive 8-Pin SO T/R

Manufacturer:	Microchip Technology, Inc
Package/Case:	SOP8
Product Type:	Discrete Semiconductor Modules
RoHS:	RoHS Compliant/Lead free 
Lifecycle:	Active



Images are for reference only

[Inquiry](#)

General Description

Fully integrated LIN specification 2.0, 2.1 and SAEJ2602-compliant transceiver with advanced EMI and ESD performance. In this device, the TXD-dominant time-out function is disabled so static low signals can be sent to the LIN bus. It interfaces the LIN protocol handler and the physical layer. The device is designed to handle low-speed data communication in vehicles and in convenience electronics. Improved slope control at the LIN bus ensures secure data communication at up to 20Kbaud with an RC oscillator for protocol handling. A sleep mode guarantees minimal current consumption, even in the case of a floating bus line or a short circuit on the LIN bus to GND.

Recommended For You

ATA6626C-PGQW

Microchip Technology, Inc
QFN

ATA6662C-TAQY

Microchip Technology, Inc
SOP8

ATA6662C-GAQW

Microchip Technology, Inc
SOP8

ATA663454-GDQW

Microchip Technology, Inc
DFN16

ATA663231-GBQW

Microchip Technology, Inc
DFN8

ATA6662-TAQY

Microchip Technology, Inc
SOP-8

ATA663254-GAQW

Microchip Technology, Inc
SOIC-8

ATA663254-GBQW

Microchip Technology, Inc
VDFN-8

ATA663211-GBQW

Microchip Technology, Inc
VDFN-8

ATA663211-GAQW

Microchip Technology, Inc

SOP8

ATA6624C-PGQW-1

Microchip Technology, Inc

VQFN20

ATA6570-GNQW1

Microchip Technology, Inc

SOP14

ATA6630-GLQW

Microchip Technology, Inc

QFN

ATA6625C-GAQW

Microchip Technology, Inc

SOP8

ATA6626-PGQW

Microchip Technology, Inc

QFN