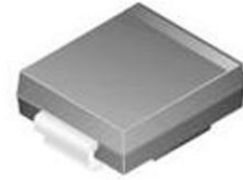


Diode TVS Single Bi-Dir 15V 1.5KW 2-Pin SMC



Images are for reference only

[Inquiry](#)

Manufacturer: [Taiwan Semiconductor](#)

Package/Case: SMC

Product Type: Thyristors

Lifecycle: Active

General Description

1500 Watt Peak Pulse Power VOLTAGE-5.0 TO 440 Volts

Key Features

Halogen-Free and RoHS compliant

For surface mount applications in order to optimize board space

Low profile package

Built-in strain relief

Glass passivated junction

Low inductance

Excellent clamping capability

Repetition Rate (duty cycle): 0.05%

Fast response time: typically less than 1.0ps from 0 Volts to V(BR) min.

Typical IR less than 1mA above 10V

High temperature soldering: 250 degrees C/10 seconds at terminals

Plastic package has Underwriters Laboratory Flammability 94V-O

Recommended For You

SMBJ12CA

Taiwan Semiconductor

SMB

SMCJ33CA

Taiwan Semiconductor

SMC

SMCJ15A

Taiwan Semiconductor

SMC

P6SMB36A

Taiwan Semiconductor

SMB

SMCJ12A

Taiwan Semiconductor

SMC

SMBJ14A

Taiwan Semiconductor

SMB

P6SMB62CA

Taiwan Semiconductor

DO-214AA

SMCJ18A

Taiwan Semiconductor

SMC(DO-214AB)

SMCJ78CA

Taiwan Semiconductor

SMC

SMCJ150A

Taiwan Semiconductor

SMC(DO-214AB)

P6KE200CA

Taiwan Semiconductor

DO-15

P6KE51A

Taiwan Semiconductor

DO-15

P6KE36A

Taiwan Semiconductor

DO-15

P6KE100A

Taiwan Semiconductor

DO-15

P6KE220A

Taiwan Semiconductor

DO-15