

Op Amp Dual Low Power Amplifier R-R I/O 5.5V 8-Pin SOT-23

T/R

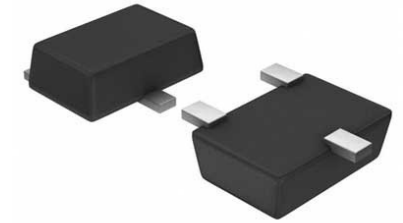
Manufacturer: [Texas Instruments, Inc](#)

Package/Case: SOT23-8

Product Type: Amplifier ICs

RoHS: RoHS Compliant/Lead free 

Lifecycle: Active



Images are for reference only

[Inquiry](#)

General Description

The OPAX348 series of amplifiers are single-supply, low-power, CMOS operational amplifiers. Featuring an extended bandwidth of 1 MHz, and a supply current of 45 μ A, the OPAX348 series is useful for low-power applications on single supplies of 2.1 V to 5.5 V.

A low supply current of 45 μ A and an input bias current of 0.5 pA, makes the OPAX348 series an optimal candidate for low-power applications such as smoke detectors and other high-impedance sensors.

The OPA348 is available in the miniature 5-pin SC70 (SOT), 5-pin SOT-23 (SOT), and 8-pin SO (SOIC) packages. The OPA2348 is available in 8-pin SOT-23 (SOT) and 8-pin SO (SOIC) packages, and the OPA4348 is offered in space-saving 14-pin TSSOP and 14-pin SO (SOIC) packages. The extended temperature range of -40°C to $+125^{\circ}\text{C}$ over all supply voltages offers design flexibility.

Key Features

Low IQ: 45 μ A (Typical)

Rail-To-Rail Input and Output

Single Supply: 2.1 V to 5.5 V

Input Bias Current: 0.5 pA

Micro Size Packages:

5-Pin SC70

8-Pin SOT-23

14-Pin TSSOP

Excellent Bandwidth-to-Power Consumption Trade-off

Number of Channels:

OPA348: 1

OPA2348: 2

OPA4348: 4

Description

The OPAx348 series of amplifiers are single-supply, low-power, CMOS operational amplifiers. Featuring an extended bandwidth of 1 MHz, and a supply current of 45 μ A, the OPAx348 series is useful for low-power applications on single supplies of 2.1 V to 5.5 V.

A low supply current of 45 μ A and an input bias current of 0.5 pA, makes the OPAx348 series an optimal candidate for low-power applications such as smoke detectors and other high-impedance sensors.

The OPA348 is available in the miniature 5-pin SC70 (SOT), 5-pin SOT-23 (SOT), and 8-pin SO (SOIC) packages. The OPA2348 is available in 8-pin SOT-23 (SOT) and 8-pin SO (SOIC) packages, and the OPA4348 is offered in space-saving 14-pin TSSOP and 14-pin SO (SOIC) packages. The extended temperature range of -40°C to $+125^{\circ}\text{C}$ over all supply voltages offers design flexibility.

Recommended For You

OPA445BM

Texas Instruments, Inc

CAN

OPA1611AIDR

Texas Instruments, Inc

SOP8

OPA388QDBVRQ1

Texas Instruments, Inc

SOT23-5

OPA2365AQDRQ1

Texas Instruments, Inc

SOP8

OPA334AIDBVR

Texas Instruments, Inc

SOT23-6

OPA2835IDGSR

Texas Instruments, Inc

MSOP10

OPA656U

Texas Instruments, Inc

SOP8

OPA360AIDCKR

Texas Instruments, Inc

SC70-6

LMI11H/NOPB

Texas Instruments, Inc

CAN8

OPA353UA

Texas Instruments, Inc
SOP8

LMI3700MX/NOPB

Texas Instruments, Inc
SOP16

OPA633KP

Texas Instruments, Inc
DIP8

OPA453FAKTWT

Texas Instruments, Inc
TO263-7

OPA4251UA

Texas Instruments, Inc
SOP14

LMV321M5X/NOPB

Texas Instruments, Inc
SOT23-5