
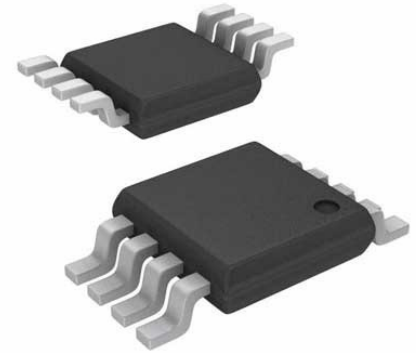


## Analog Switch Dual SPST Automotive 8-Pin MSOP Tube

<b>Manufacturer:</b>	<a href="#">Analog Devices, Inc</a>
<b>Package/Case:</b>	MSOP8
<b>Product Type:</b>	Switches
<b>RoHS:</b>	RoHS Compliant/Lead free 
<b>Lifecycle:</b>	Active



Images are for reference only

[Inquiry](#)

### General Description

The ADG821/ADG822/ADG823 are monolithic CMOS single-pole, single-throw (SPST) switches. These switches are designed on an advanced submicron process that provides low power dissipation, yet gives high switching speed, low on resistance, and low leakage currents. The ADG821/ADG822/ADG823 are designed to operate from a single 1.8 V to 5.5 V supply, making them ideal for use in battery-powered instruments.

Each switch of the ADG821/ADG822/ADG823 conducts equally well in both directions when on. The ADG821/ADG822/ADG823 contain two independent SPST switches. The ADG821 and ADG822 differ only in that both switches are normally open and normally closed, respectively. In the ADG823, Switch 1 is normally open and Switch 2 is normally closed. The ADG823 exhibits break-before-make switching action.

The ADG821/ADG822/ADG823 are available in an 8-lead MSOP.

### Key Features

- 0.8  $\Omega$  maximum on resistance @ 125°C
- 0.3  $\Omega$  maximum on resistance flatness @ 125°C
- 1.8 V to 5.5 V single supply
- 200 mA current carrying capability
- Automotive temperature range: -40°C to +125°C
- Rail-to-rail operation
- 8-lead MSOP
- 33 ns switching times
- Typical power consumption: <0.01  $\mu$ W
- TTL-/CMOS-compatible inputs
- Pin-compatible with the ADG721/ADG722/ADG723

### Application

- Power routing
- Battery-powered systems
- Communication systems
- Data acquisition systems
- Audio and video signal routing
- Cellular phones
- Modems
- PCMCIA cards
- Hard drives
- Relay replacement

## Recommended For You

---

### **ADG201HSKNZ**

Analog Devices, Inc  
DIP16

### **ADG506AKPZ**

Analog Devices, Inc  
PLCC28

### **ADG202AKNZ**

Analog Devices, Inc  
DIP16

### **AD8180ARZ**

Analog Devices, Inc  
SOP8

### **ADG509ATQ**

Analog Devices, Inc  
CDIP16

### **ADG526ATQ**

Analog Devices, Inc  
CDIP

### **ADG508FBNZ**

Analog Devices, Inc  
DIP16

### **ADG433BRZ**

Analog Devices, Inc  
SOP16

### **ADG507AKRZ**

Analog Devices, Inc  
SOP28

### **ADG713BRUZ**

Analog Devices, Inc  
TSSOP16

### **ADG1607BRUZ**

Analog Devices, Inc  
TSSOP28

### **ADG526AKRZ**

Analog Devices, Inc  
SOP28

### **ADG417BRZ**

Analog Devices, Inc  
SOP-8

### **ADG436BNZ**

Analog Devices, Inc  
DIP

### **ADG774ABRQZ**

Analog Devices, Inc  
SSOP16